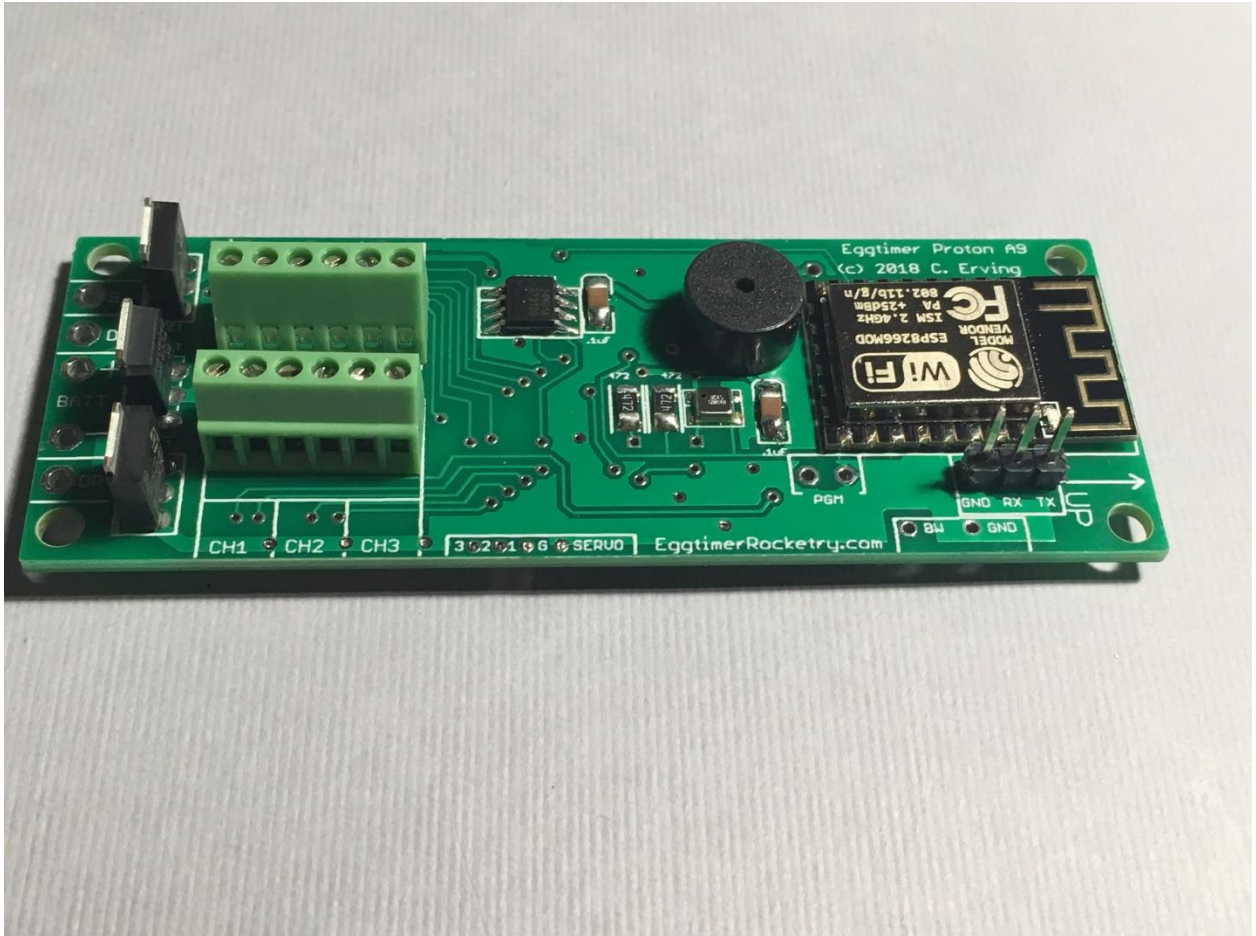


# Eggtimer Proton User's Guide

Software Rev. 2.01C  
(for hardware versions A9 and C14)



© 2024 Eggtimer Rocketry  
All Rights Reserved

## Eggtimer Proton Features

WiFi-Enabled, SIX-Output logging flight computer

120G Accelerometer (A9 board) or 200G accelerometer (C-series boards)

Flexible deployment and arming modes, to handle virtually any flight scenario

Any channel can perform any function... no dedicated "Drogue" or "Main" channels

First three channels can be set for standard servos during deployments, variable servo travel

Configuration, arming, and downloading can all be done with any WiFi/browser-enabled device

No apps required on your device, just a browser

Size: 3.25" x 1.3", fits easily in a 38mm coupler tube, weighs about 20 grams

Altimeter records data up to 60,000'

Detailed flight data for 14 flights is saved, and can be downloaded using your browser

Summary data can be downloaded or viewed on your browser, immediately after the flight

Fully "mach immune", deployments are inhibited until the rocket is moving slowly near apogee

Battery input is fully polarity protected

Works with a 2S/7.4V LiPo battery, 300 mAH or more recommended

Optional separate battery input (7V-28V) for deployment channels protects against "brownouts"

Works with almost all common deployment devices, will even light an Estes® igniter with a 2S LiPo

Each output channel can handle up to 10A/28V, system capacity 30A

Test mode so you can do an actual pyro test remotely up to 200' away from your rocket

Dual-ended deployment outputs, igniters are essentially "dead" until well into the flight

No switch needed, since it's disarmed and the igniters are dead until YOU arm it

"Fail-Safe" mode can fire main chute (in deployment mode) if a drogue failure is detected, preventing a potential high-speed chute deployment or crash

Connects to Eggtimer Telemetry Module, to display real-time flight data on an Eggfinder LCD receiver

## Disclaimers, Legal Stuff, Etc.

The Eggtimer Proton is meant to be used for hobby and experimental rocketry purposes. Although hobby rocketry has an admirable safety record, largely due to the efforts of the good people at the National Association of Rocketry (NAR) and the Tripoli Rocketry Association (TRA), rocketry can be dangerous if proper safety precautions are not observed. This is particularly true with some of the advanced techniques like pyrotechnic parachute deployment and airstarting motors. People can and have been seriously injured by not following recognized and accepted safety practices. We cannot be responsible for your actions.

We *strongly* recommend that if you are not a member of either the NAR or the TRA, you join one of them, join a local rocketry club, and pick the brains of experienced members before you try any kind of electronic deployment or airstart flight. The safety information included in these instructions is by no means comprehensive or complete, and is no substitute for the supervision and advice of experienced rocketeers.

## Limited Warranty

Eggtimer Rocketry warrants that all of the parts on the packing list of this Eggtimer Rocketry kit have been included, and that they are all in working condition. If you are missing something, contact us immediately at [support@EggtimerRocketry.com](mailto:support@EggtimerRocketry.com) and we will send you whatever it is that you are missing. If you are missing something really egregious (like the PC board or the processor, for example), we may ask you to return the entire kit unbuilt, we will send you a prepaid shipping label for this purpose. We'd especially like to see the packing list so we can figure out what went wrong so it doesn't happen again...

If your Eggtimer Proton does not work properly after assembly, take a deep breath, get out the magnifying glass and a good light, and see if you have inadvertently created a solder bridge somewhere. Chances are pretty good that you have, or that you have installed a part incorrectly. We are a very small company and we just don't have the resources to repair your board, but we will be more than happy to give you advice and we might be able to help you find your error if you send us some high resolution pictures, to [support@EggtimerRocketry.com](mailto:support@EggtimerRocketry.com). We cannot take responsibility for your assembly techniques; if you do not have experience building kits of this nature, we recommend that you enlist some help. (Another reason for joining a rocketry club, there is usually at least one electronically-inclined member who can be bribed with a beverage or two to give you a hand. Engineering types love a challenge, especially if it's easy for them but hard for you.)

Eggtimer Rocketry warrants that when properly assembled this Eggtimer Rocketry product will perform substantially according to the published documentation. This means that we spent a lot of time trying to ensure that it's going to work the way that we say it does, and we try to fix things that don't quite work right in a reasonable time. Nevertheless, we can not and do not warrant that this product is perfect and will meet every rocketry purpose, for the simple reason that we can't test every possible rocket/motor/environmental combination. It is the buyer's responsibility to determine the suitability of the Eggtimer Proton for their particular purpose. If you have a problem with this, please contact us and we will be happy to send you a prepaid return label for your unbuilt kit and we will refund the purchase price on receipt of your kit.

## Meet the Eggtimer Proton

The Eggtimer Proton is an advanced hobby rocketry flight computer with a barometric pressure sensor, high-G axial accelerometer, and six high-current output channels. Its job is to properly deploy your parachutes and bring your high-powered rocket safely to the ground, and to record flight information for later analysis. In addition, it can handle other events such as airstarting motors or just about any other event that you can come up with. Each channel can be configured independently for whatever function you need. In addition, channels can be "clustered" so that a single event triggers multiple channels, perfect for clustered airstarts. Channels can be triggered by a number of different events for an almost unlimited combination of scenarios. It can also be connected to an optional Eggtimer Telemetry Module, which transmits live flight data to an Eggfinder LCD receiver on the ground, giving you real-time altitude, velocity, deployment status, and other information.

It's nice to get your rocket down in one piece, but it's also nice to know how the flight went. The Proton can record your last 14 flights, and you can easily view and/or download both summary statistical information and detailed time vs. event information. The detail output format is a standard .csv file, which can be imported into virtually any data analysis program.

What makes the Proton different from most other flight computers is that it has a WiFi interface. Instead of using switches, jumpers, or a data cable to your laptop to configure it, you simply connect to it with your phone, tablet, or computer using WiFi and a browser like Safari, Firefox, Internet Explorer, or Chrome. You remotely arm it at the pad using your handheld device too, so for many applications you do not need a mechanical switch... deployment power is shut off until you remotely arm the Proton for flight, AND the Proton detects that you have launched. Flight data is downloaded to your handheld device using WiFi, and with the installation of an appropriate spreadsheet or other data analysis program you can actually get a flight graph within seconds of recovering your rocket.

Since one of the tenants of successful electronic deployment is ground testing, the Proton incorporates a ground-test feature so that you can check YOUR battery with YOUR igniters to make sure that they are compatible and will work in flight. This is done remotely over WiFi, so you can even test with "live" pyro charges, standing up to 100' away from your rocket. No more fiddling with wires connected to a battery while standing next to the rocket.

The output channels are capable of triggering just about any load that you're likely to encounter, we've even fired a medium-current Estes igniter with it using a 2S/7.4V LiPo. You can set the output on-time from 1-9 seconds, so it's ideal for use with a hot-wire non-pyro deployment. There's a separate battery input for the deployment circuitry, so you can optionally use a second battery on the deployment outputs that 100% guarantees that a deployment glitch will not cause your Proton to "brownout" due to low voltage. Each channel is overload protected so they can't be blown out with an accidental short.

You can also use standard PWM hobby servos with the Proton, for non-pyro deployments. This makes it ideal for use by ARC teams that want to experiment with electronic deployment but can't use pyrotechnics, or for flights over 30,000' in which pyro charges may not be effective.

In addition to deployment functions, the Proton can also be used to "airstart" additional motors in flight, either for "strap on" boosters or for starting a second stage motor. It works as a timer that starts at launch or motor burnouts, and is qualified by breakwire support, velocity-at-time, and/or

altitude at time. There is also a Barometric-Altitude-Deviation calculation that won't fire your airstart motor if the rocket is moving off-axis. This helps ensure that your second stage won't light unless your rocket is going "up".

## **Getting to know your Proton**

Although the Proton seems relatively simple, you will want to familiarize yourself with it BEFORE you install it in a rocket, and certainly before you try flying it.

**Battery (BATT)** – Two solder pads for connecting the Proton’s battery. It’s polarity protected, so if you hook up the battery backwards it won’t damage anything. We recommend a 2S/7.4V LiPo battery, 300 mAH or higher... more on that later.

**Buzzer** - “Beeps” out status, warnings, apogee at landing, and other important notifications.

**Output Channels (CH1-CH6)** - Six sets of deployment output terminals, each with a 10A/40V capacity.

**Battery Output (B+)** – Used for the single-battery option when jumpered to the DP+ pad.

**Deployment Power (DP+/DP-)** – Two solder pads for connecting a separate deployment battery. If you choose to use the Proton with a single battery for both the computer and the deployment side, you simply jumper the DP+ pad to the B+ pad, which provides the power for the deployment channels.

**Servo Outputs** - Three pads marked "1" through "3", and one labeled "G", for connecting logic-level servos. These are mirrored to the CH1-CH3 output channels.

**Serial Header** – 3-pin header that’s used with an EggTimer USB-Serial interface for updating the software or for viewing the WiFi passkey (in case you lose it). It can also be used to connect to the EggTimer Telemetry Module for sending real-time flight data to an Eggfinder LCD receiver; see the EggTimer Telemetry Module User’s Guide for further information (we don’t cover that in this manual).

**Programming Jumper Pads (PGM)** – Two pads used to put the Proton into programming mode at boot-up, for uploading software updates. Normally you won’t do anything with these pads.

**3.3V Output (3V3)** – 3.3V output for use with EggTimer Telemetry Module

**STAT Output (Rev. C only)** – Status output that indicates that the Proton is armed. This can be used with an LED as an external “armed” indicator on the pad, or for otherwise indicating that the Proton is armed and ready for flight. The output is 3.3V, 10 mA maximum.

## Mounting Your Eggtimer Proton

**IMPORTANT: Your Proton must be mounted so that the "UP" labels on the board are pointed towards the nose cone of your rocket! Pointing it in the wrong direction will have adverse effects on your flight data and some functions (although we have designed the software so that your parachutes will still deploy.)**

The Proton is relatively small and light, and can be mounted several ways. The most common way of mounting it is using four #4 screws, either self-tapping screws for wood sleds (put a drop of CA glue in the hole first to prevent the screws from loosening in flight) or machine screws (we recommend using Nylon-insert nuts so they don't come loose). We recommend that you use Nylon washers or rubber o-rings between the board and the screw heads to prevent any possibility of shorts. You'll also need to put some kind of spacer between the bottom of the board and the sled, about 3/16" high. Two #4 nylon washers are ideal for that. There's a mounting template on the Eggtimer Rocketry web site to help you plan your installation.

We do NOT recommend using double-sided foam "servo" tape to mount the Proton to your AV sled. There are parts on both sides of the board, so the bottom isn't flat. You won't get 100% coverage with the servo tape, so there's a potential for it coming loose in flight, which is bad. Also, when you pull it off, you might lift a part off the PC board... that would be bad too.

However you mount it, be careful not to overtighten the screws and possibly bend the circuit board. The parts on the bottom of the board can break if you force them against the bottom of your sled... don't ask us how we know. We recommend that you leave a little space between the board and the sled... about the thickness of a credit card.

The Proton MUST be mounted so that the "UP" markings near the WiFi module face the nose of your rocket. You also want to make sure that the holes are drilled properly so that it faces as vertically as possible. If you get it a tiny bit crooked it's not going to matter much, but the more care that you put into the mounting the better your results will be.

Since the Proton primarily uses a barometric pressure sensor to determine altitude in flight, you'll need to drill a few holes in your AV bay to vent it to the outside air. There's a lot of debate about what the right size for the holes is, how many, etc., but the most accepted rule of thumb is: One 1/4" diameter hole for every 100 square inches of AV bay volume. For most average AV bays that's going to be three 3/32" to 3/16" holes.

Now the tricky part is that you don't want ONE vent hole... the optimum number is THREE, equally spaced along the AV bay perimeter. This works out to about three 5/32" holes for every 100 square inches of volume. That's just about the size of a 4" diameter AV bay that's 8" long, so you can work up or down based on that. We also recommend that you don't mount it so that the pressure sensor is directly across from the vent holes in your AV bay. You can get funny currents during flight, which may compromise the accuracy of the altitude readings.

## Wiring Your Eggtimer Proton

The Proton is designed to have the power connector wires directly soldered to the board, and outputs connected using the screw terminal blocks. You can also omit the terminal blocks for the outputs and solder pigtails to the output pads on the board, so you can use whatever method of terminating the connections you want: barrier strips, solder directly to pigtails, through-bulkhead terminals, etc. It also lowers the profile of the board a little bit, which may be useful in some installations (such as the AV bay of a 38mm sustainer). Soldering connections to the board prevents the connections from coming loose in flight due to vibrations and G-forces.

We've found that simply wire-wrapping the igniters to a "pigtail" wire soldered to the board works very well for smaller rockets. By soldering the pigtails to the board rather than having screw terminal blocks, you eliminate the possibility that the wire may work loose from the terminal in flight. It saves space too, which is usually at a premium with 38mm and skinnier rockets. We also like the wiring kits sold by Binder Design Rocketry, the wire they supply is Teflon-jacketed and lends itself well to solder-type wiring. Their charge wells with integral through-bulkhead terminals also work great for 39mm-54mm rockets.

For most deployment loads we recommend using #22-#26 gauge wire for wiring to the Proton board, we like to use the #24 gauge stranded wire that's found in Cat-5 network cables. It's cheap, easy to find, and just the right size. It's also twisted together in nice solid-striped pairs, so it's easy to tell the "+" from the "-" wire. If you can, get the "plenum" cable, since it has a Teflon jacket and doesn't melt as easily when you solder to it as the standard "riser" cable. You can also use solid wire, but solid wire is harder to work with and has a tendency to break after being bent a few times. These breaks can be a pain to find, because they are typically inside the insulator jacket where you can't see them.

If you use stranded wire, you **MUST TIN THE END OF THE WIRES BEFORE SOLDERING TO THE BOARD**. This is to prevent stray "whiskers" of wire strands from coming loose and bridging pads, or breaking off and landing on the board in some random place. We've seen the results of this happening, it's not pretty, and they can be very hard to find if they lodge underneath the interface chip or in some other hidden spot on the board.

If you build the board with the terminal block option, be sure to tin whatever wires you are using for your igniters before you insert them into the terminal block. Loose strands here can prevent deployments, if a strand comes loose and lodges in the wrong place it could cause an immediate deployment when you connect the battery. That would be bad...

You can also use crimp-type ferrules, they work great but make sure they are the right size. Since there's only 2.5 mm between the poles on the terminal block, you need to use the smallest ones available. Be sure to get the right tool for them... don't use pliers to crimp them, the wires **WILL** work loose if you do.

Last, but not least, we strongly recommend that all wiring on your sled be zip-tied or otherwise suitably immobilized to the sled so that there's no chance of any wires coming loose in flight. We've seen it happen, and the results are not pretty.

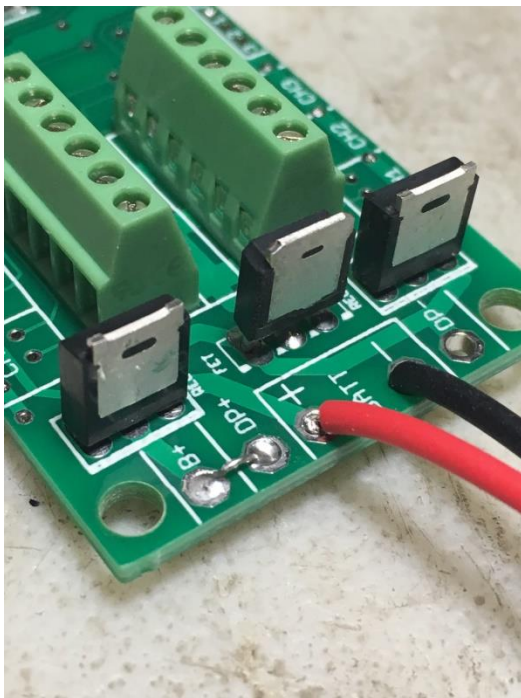


## The Single-Battery Option

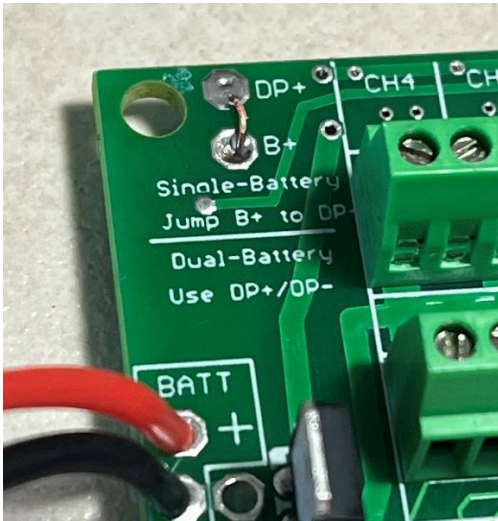
For most applications, you can get by using a single 2S Lipo battery. Typical applications would be a dual-deployment rocket or a sustainer in a two-stage rocket using a relatively low-current dipped ematch as a motor starter. In these cases, a 2S/7.4V LiPo battery would work fine, so it's not really necessary to use a second battery from a voltage/current standpoint... even if the ematch dead-shortened, the drivers' protection circuit would keep your battery from going low enough to reset the logic.

For a single battery, you only need to solder a jumper (or switch, see below) between the B+ and DP+ pads that are located next to the two BATT pads. This will provide power to the deployment circuitry directly from the battery. Nothing else is necessary... see the picture below.

### Rev. "A" Single Battery Option



## Rev. “C” Single Battery Option



## The Dual-Battery Option

Using separate batteries for the Proton’s computer and deployment side has some advantages, and one disadvantage. The disadvantage is that it’s going to take more stuff... one more battery, one more connector, and possibly, one more switch. The advantages that: 1) You can use a different voltage battery than the computer side, which you may want to do for high-current loads such as solenoids; and (the big one), 2) No matter what happens on the deployment side, including a complete loss of deployment battery power, it’s not going to affect the logic side. This is the same philosophy behind the dual-battery architecture on other EggTimer Rocketry flight computers.

Some other flight computers use a big capacitor on the power output, with a single battery to prevent brownouts. The idea is that the capacitor provides a few seconds of power to the logic in the event of a loss of power. This protects against momentary disconnects such as a glitch due to G-forces when your drogue deploys, but it won’t protect against a longer-term brownout such as a shorted ematch after firing. Once that capacitor drains, your altimeter shuts off because the low voltage condition on that battery will reset the logic or shut it off completely. With the Proton’s dual-battery setup, if you have a short on an output channel the output driver is going to shut off that channel, preventing it from taking out the deployment battery, and the logic battery won’t be affected no matter what happens on the deployment side.

To wire up your Proton for dual-batteries, wire the +/positive side of the deployment battery connector to the DP+ pad (next to the BATT pads), and the -/negative side of the battery to the DP- pad (located between the deployment output pads). Leave the B+ pad unconnected. If you are going to be using a separate disconnect switch for the deployment battery you will generally wire it in series with the +/positive side, so that it goes between the DP+ pad and the +/positive lead of your battery connector.

If you use a separate deployment battery, remember that you will not see continuity on either channel until you power on the deployment battery. If you use a switch, we recommend that you turn it on to test igniter continuity at your work table BEFORE you add the pyro powder to your charge wells, then shut it off until you’re safely on the pad. Turning on the deployment

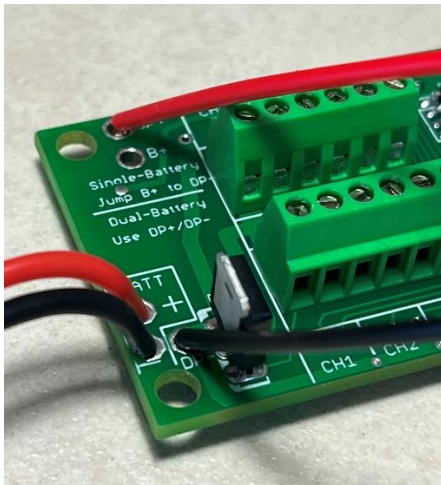
power does NOT power on the deployment power's FET; it only allows the trickle current to go through the circuitry to test continuity.

Note: The minimum battery that we recommend for a two-battery setup is a 2S 7.4V LiPo. The deployment drivers require about 5V or more, so you **can not** use a 1S/3.7V LiPo as a deployment battery. The drivers are rated to 28V, so you can use up to a 6S/22.2V LiPo as the deployment battery with no problem. If your output load works fine with a 2S/7.4V LiPo, we recommend that you stick with a single-battery configuration... if you have a dead-short, the drivers' short-circuit protection will prevent an undervoltage condition on the logic side.

### Rev. "A" Dual-Battery Option

Insert picture here

### Rev. "C" Dual-Battery Option



## About Switches...

The Proton in its default configuration will not self-arm itself. If you power it up, it will sit there on the Status page forever, changing the validation code every 60 seconds... you have to actually arm it using the validation code in order to start a flight. In addition, the unique dual-ended deployment output prevents any significant current from getting to the igniter until it's armed and actually in-flight.

Because of this, for most flights using electronic deployments you do not need a separate power switch if you're using the single-battery option. You can simply connect the battery to a locking connector such as a JST connector and you're ready to go until you arm it on the pad. This makes your AV bay build easier and smaller, and of course it makes your pre-flight procedure a lot simpler.

The Proton is different than most other altimeters because it has dual-ended switching on the deployment outputs: BOTH the "+" and the "-" side are switched off, leaving the igniter essentially dead until it's actually in flight (except for a tiny trickle current that's used to test continuity). For the igniter to fire, both sides have to be activated independently, and this can't happen until you arm the Proton remotely, you're in the air, and the deployment enabling logic has been triggered. This meets the NFPA and Tripoli/NAR requirement that pyrotechnics be de-energized until ready for flight. However, depending on your local regulations you may need to add a switch to the pyro outputs. In the event that you do decide to add a switch, you have a few options, since the Proton can use a separate power supply for the deployment devices.

If you are using a single battery for both the computer and the deployment side and you need to use a deployment disconnect switch, you can simply put a switch between the B+ and DP+ pads instead of a jumper. Turn on the switch when you're on the pad to power up the igniters, confirm that everything is OK, then arm your Proton and go. We do this for airstarts, to add an extra layer of safety beyond what is built into the Proton.

If you are using a separate battery for the deployment side, you can put the switch in series with the deployment power that goes on the DP+ pad. This is a common configuration for HPR Level 3 rockets because having the separate deployment battery 100% prevents any kind of deployment glitch from affecting the flight computer side. Doing it this way allows you to make whatever changes you may need to make (for example, lowering the Main deployment altitude if the wind picks up a bit) while leaving the deployment side powered off.

Whatever switch you use, make sure that it can handle the expected G forces that you expect the rocket to experience during flight. In general, we recommend that if you use a slide switch that it is mounted so that it slides sideways, not up and down. This will prevent G forces from possibly causing the switch to "bounce", interrupting the power to the Proton, which is not a good thing. Any slide switch that you use must be rated to at least twice the G forces that you are likely to see... a \$1 hardware store special isn't going to cut it, spend a few bucks and get a high-quality switch.

You can also use a "push-on, push-off" type switch. Many users have had good success with them, also mounted laterally. You can put the switch just behind one of the air ports, and actuate it by pushing a small pin/wire through the hole. Just like with slide switches, spend the money to get a good quality switch.

A better option would be a more positive switch, such as a screw-type switch that locks down positively. Since the major forces on rockets are almost entirely along the longitudinal axis of the rocket, the contacts on a rotary switch are unlikely to be interrupted by G forces. Rail-Buttons.com, Featherweight Rocketry, and Missile Works all make good small screw-type switches, they use a screw to positively lock down the contacts and completely eliminate any possibility of the switch being jarred open. You can also make your own screw switch, Google around and you can probably find some good examples.

Another really good option are snap-lever switches using a pull-pin to disable the power, see the ones made by Lab Rat Rocketry. We have used these to disable power for aistarted motors, they work great and the switches are rated for high-G's and vibrations.

Finally, if you want to avoid moving contacts altogether, check out our Eggtimer WiFi Switch ([www.EggtimerRocketry.com](http://www.EggtimerRocketry.com)). You can turn it on or off using your mobile device too, independently of your Proton. It may be a bit larger than other switch options but the convenience of not having to fumble around looking for the switch inside the AV bay more than makes up for the minor weight and size penalty, and you can safely arm your deployment electronics from up to 200' away from your rocket. And yes, the WiFi Switch will not interfere with the WiFi signal from your Proton.

## Proton Battery Options

The Proton requires a minimum of 6V to operate (it will NOT work properly with a 1S Lipo battery!) For most installations, we recommend using a 2S 7.4V LiPo battery. You'll need one that's at least 300 mAH, since the Proton draws 85 mA (it's WiFi... that's the nature of the beast). You CAN get away with smaller batteries, IF (and ONLY IF) you connect the fully-charged battery up right before flying. We've used batteries as small as 180 mAH in testing, but we have several fully-charged batteries on-hand and we change them with a fresh one after each flight. With a larger battery, you can take your time... a 500 mAH 2S LiPo is about the same size and weight as a 9V alkaline battery, and will last all day. That's what we use for all but the skinniest of rockets. For 3" or larger diameter rockets, we like the skinny packs used for Airsoft guns... they're about 100mm x 18mm x 12mm, so it's easy to fit them on the back of the sled, and they have a lot of capacity... about 1200 mAH. You can run all weekend on one charge.

While we're on the subject of 9V alkaline batteries, DO NOT, repeat, DO NOT use a 9V battery to power the Proton. At all. Even for testing. They don't source much current, especially compared to a 2S LiPo. While it will appear to work fine once it's new, it will quickly drain, and you will find that the WiFi range starts to rapidly decrease, and the Proton will appear to become unresponsive. If you're using the single-battery option, the chance of a low-voltage "brownout" is much higher than it would be with a 2S LiPo. WiFi takes a lot of power, so make sure you feed it well.

In addition, if you are using a single battery we recommend that the current-sourcing capacity of the battery should be at least 5x the all-fire current of the igniter (or the sum of the igniters, if you're firing a cluster), to prevent any chance of the voltage dipping. To get that number, multiply the capacity in mAH by the "C" number of the battery. For example, a 300 mAH battery rated at 20C will easily put out 6,000 mA, or 6A. If you igniter is rated for 750 mA all-fire,  $5 \times 750 = 3750$  mA, so that 300 mAH/20C battery would be just fine.

If you're using a separate battery for the deployment side, whatever battery will fire your igniter or operate your other deployment device (hot wire, servo, etc.) is fine. Little 2S/7.4V 180 mAH LiPo batteries work great with most ematches, and are so small that you can easily mount them with a little servo tape just about anywhere you want in your AV bay. The output drivers will each handle up to 10A and 28V, so if you have something really power-hungry (like a solenoid, for example), you can simply use a bigger battery. You don't have to worry about "burning out" the drivers, because they're internally current-limited and thermally-protected; if you try to push too much current through them, they'll simply shut off until they cool off (kind of like a thermal circuit breaker.)

You can use a 9V alkaline battery too **for the deployment side only with a dual-battery setup** if that's what you like, just be aware that they're pretty big and heavy by contemporary standards. If you do use a 9V battery, one more thing you need to be careful about is that some brands of 9V batteries simply have cells pressed together in a metal case, so high G forces can cause the battery to fail. If you absolutely HAVE to use a 9V battery, we recommend Duracell 9V batteries, because they use welded cells internally and are less likely to come apart than some other brands. If you do decide to use an alkaline 9V battery, we recommend that you replace it after EVERY flight. Yes, that can get expensive. And yes, you don't have to worry about your battery having been drained too much by a previous flight... enough said.

Regardless of what kind of batteries you choose, **charge or swap out your batteries before every session, and check the voltage with a digital voltmeter before every flight.** The voltage check on the Proton is only on the processor battery, it does not test the deployment battery (assuming it's separate). You don't want to spend all the time to find the "perfect" battery combination for your 54mm minimum-diameter mach-buster only to realize after you dig it out of the ground after lawn-staking it that you forgot to charge the deployment battery or because it ran down while sitting for an hour on the pad.

Although you probably won't hurt the Proton itself by dead-shorting the outputs, the voltage drop due to the short may cause the battery voltage to drop low enough to cause the processor to reset, although the drivers have a low-voltage cutoff at about 4V that's designed to prevent this from happening. This is why we recommend having a battery current capacity of at least 5x the all-fire current of your igniter; if you get a short, chances are that the battery is going to simply generate a little heat in the drivers and wires for the few seconds that it's on, then it will be turned off and everything will be OK. If your battery only has a marginal current capability, the same short may cause the Proton to reset if the voltage drops below the processor threshold (about 2.8V). The deployment drivers are designed to shut down if the source voltage drops below 4V, so that theoretically shouldn't happen, but it's better not to chance it. Depending on when this happens, the effect could range from not getting your peak altitude reading (annoying), to deploying only the drogue chute (if this happens when you fire the drogue), to a lawn stake if you're only using the drogue function and it fails to fire. Ouch. So, choose your battery wisely if you're using a single battery.

If you're using an ematch, you only need to set the deployment on-time to one second... if they don't fire in a few dozen milliseconds they probably won't fire at all. If you're using a hot-wire (for example, to cut a cable tie or nylon fishing line) you'll need to experiment with the on-time.. you can go up to 9 seconds. You're going to want to do this on the ground, of course... flight-time is NOT for experimenting with your deployment parameters!

## Using your Proton

What sets the Proton apart from other hobby rocketry flight computers is that it doesn't use any switches, jumpers, or cables to configure or download flight data. It's all done over a WiFi connection to your handheld device, using a common Internet browser. The pages have been written very simply so that they do not require Java, Javascript, .NET, or any other scripting language to operate... they're all just simple HTML 1.1. The pages are simple text with minimal formatting, and while they may not be particularly pretty they are very easy to read, and they render virtually the same on every browser and platform we've tested.

### About Browsers and OS's...

All of the Proton's functions will work almost identically with just about any browser that you use. Because of the differences in the way that browsers display things and handle downloaded files, however, you may find that one browser works better than another with your particular platform. Interestingly enough, some browsers are much faster than others... generally the ones that are provided by the vendor. Go figure...

In general, our recommendations are as follows, in order of preference:

Apple iOS: Safari, Firefox

Android: Firefox, Safari (yes, it's an old version...), Chrome

Windows: Internet Explorer, Edge, Firefox, Safari, Chrome

Note that Chrome comes out last on all of these lists. The reason is that Chrome does not handle the flight detail download function very well. In particular on an Android it can't tell what to do with the .CSV file that's generated from the flight detail download, so it either hangs for awhile or comes right back and does nothing. It's a shame, because we really like Chrome, but for this application it doesn't work very well. If you have an Android, use Firefox instead, it will display the .CSV file and launch your viewer if you have one installed.

Individual notes regarding browser compatibility and issues are in Appendix D.

### Connecting to Your Proton

Each Proton has its own unique WiFi SSID network name, which is going to look something like

**Proton\_2abcd**

The last 5 or 6 characters are derived from the unique MAC address of the Proton's WiFi module, so they're pretty much unique. You can optionally change the SSID; instructions on doing that are at the end of this manual. That's helpful if you have multiple EggTimer WiFi devices, such as on a two-stage rocket... you can change them to "Stage1" and "Stage2", for example. The Proton uses an 802.11n WiFi protocol and the WPA2-PSK connection protocol, so you need to enter an 8-digit passkey to connect. The passkey for your Proton is on a label on the WiFi module that you got when you built it. If you accidentally lose it, you can also retrieve



it by connecting an Eggtimer USB-TTL data interface to the programming header. See the Appendix E for instructions on how to do this. We recommend that you put a label on top of the WiFi module with the passkey... you'll be glad you did at some point.

To connect to your Proton, hook up the battery and wait about 10 seconds for it to initialize. You'll hear some beeping as it goes through its self-test, and at the end of the long 3-second beep it should be discoverable over WiFi. Go to the WiFi Settings on your handheld device, and browse the wireless networks. You should see your Proton listed as something like "Proton\_1C2b3c". Choose that network, and enter the passkey when prompted. Hint: When asked, be sure to check "save the password" and/or "connect automatically when in range". This will keep you from having to do this every time. Note that if you have multiple Proton's you might NOT want to autoconnect... keep the passkey handy by using a memo pad app on your device.

Open up your browser with a new window, **we strongly recommend that you use the "private" or "incognito" mode on your browser to prevent pages from being cached.** Also, we recommend that you avoid using the back arrow... some pages update data for use by later pages, and the back arrow may prevent that data from updating. If your home page is something on the Internet, you're gonna get a "Page can not be displayed" message because you're connected to your Proton, not the Internet. That's OK and normal. Set your browser to the Proton's home page:

#### **192.168.4.1**

and you should see the Status Page. At this point, you should Bookmark this page so you don't have to re-enter the address every time... you're going to be going here a lot. **Note: DO NOT bookmark any Proton page other than this one... especially pages with stuff after the "192.168.4.1". Unpredictable results may occur...**

#### **IMPORTANT:**

**NEVER "SWIPE" YOUR PROTON PAGES TO "CLOSE" THEM... YOUR DEVICE LEAVES THEM OPEN. GO TO THE "x" AND ACTUALLY CLOSE THE PAGE. SIMILARLY, DO NOT REFRESH A PAGE USING THE BROWSER'S REFRESH BUTTON, IT WILL RESUBMIT THE PAGE AND IT IS POSSIBLE FOR UNINTENDED CONSEQUENCES TO OCCUR.**

### **The Status Page**

The first thing you will see is the Status Page. It tells you what your Proton is doing, and gives you some other important information:

- Device Name (important if you have more than one of them in your rocket!)
- Flight Comments
- Flight Status: Armed or Disarmed
- Deployment Power (C-series only): ON or OFF  
(shows you whether there is power to the outputs...you won't be able to arm your Proton if you don't have deployment power)

- Deployment channel number/name, status, settings, and link to change the settings (see below)
- Computer-side battery voltage
- Above-Sea-Level (ASL) altitude
- Raw accelerometer value, to let you know that it's working
- Temperature (it may read low for awhile... it takes 10-15 minutes to stabilize)

For arming:

- The current validation code (it changes every 60 seconds that you're idle)
- A text box to enter the validation code into for arming
- An "ARM" button for arming (once you type in the validation code)
- Wait to Arm time (more on that later)

Links:

- Deployment channel "Change" links – for changing deployment channel in-flight settings
- Settings – takes you to the Global Settings page
- Flights – takes you to the Flight Select page, for displaying saved flight info

<b>Proton_2abcd</b>	<b>2.01C</b>
<b>Proton.test.K600</b>	
<b>Status:</b> <b>Disarmed</b>	
Validation Code: <b>4567</b>	
<input type="text" value="....."/>	
<b>REFRESH</b>	
<b>Wait to Arm: 147 sec</b>	
<b>Deployment Power:</b> <b>ON</b>	
<b>Channel 1 Name1</b>	
<b>Droge</b>	<u>Change</u>
Delay: 0.0	<u>Settings</u>
<b>_Channel Status:</b>	<b>ON</b>
<b>Channel 2 Name2</b>	
<b>Main</b>	<u>Change</u>
Altitude: 500	<u>Settings</u>

Channel Status: **ON**

**Channel 3 Name3**  
**Airstart**  
 Delay: 2.2      [Settings](#)  
 Channel Status: **OFF**

**Channel 4**  
**OFF**    [Change](#)

**Channel 5 Name5**  
**Clustered**    [Change](#)  
 Channel: 3      [Settings](#)  
 Channel Status: **OFF**

**Channel 6: Off**      [Change](#)

**Battery: 8.0v**  
**ASL Alt: 1050 ft**  
**Accel: 0.1G Raw:-7**  
**Temp: 74.2**

[Settings](#)      [Flights](#)

Depending on what you have hooked up to the deployment channels and how it's powered, you may see the deployment channel status displayed in different colors. The colors are:

- **Silver** – Status does not affect arming (channel turned off, for example)
- **Aqua** - Good deployment status, i.e. channel is enabled and you have continuity
- **Red** – No continuity on enabled channel, arming not possible

The Proton updates the deployment status every time that the page refreshes. If you leave the page alone and the browser is open, it will refresh every 60 seconds. When it refreshes, you'll hear a little beep from the speaker... this also lets you know that you've got power and are connected to your Proton. In addition, every time the page refreshes a new validation code is created. You can force a page refresh by hitting the refresh icon on your browser, or by clicking on the ARM button without entering a validation code or entering an invalid validation code.

## Arming Your Proton

In order to start a flight, you need to arm the Proton. For safety reasons, the Proton will not self-arm; that is, you must go to the Status page and arm it by entering the current Validation Code in the text box and clicking on the Arm button for the flight sequence to begin. This is different than most other flight computers, which will automatically go into an arming sequence a short time after powering up, assuming that the continuity is OK. (Note that you can configure the

Proton to self-arm if you wish, although that's not the default behavior... more on that later.) The Proton is a little bit different because it's assumed that you're not using a power switch so you are basically using the arming sequence as a remote switch. This is the reason why we have the dual-ended switching architecture; it ensures that your ematch/igniter is essentially "dead" until the Proton has been armed AND you have a flight in progress. This virtually guarantees that you cannot fire a deployment charge (or an airstarted motor...) on the ground.

If you have a C-series Proton (2023 or later) you will see a Deployment Power indicator on the Status Page, in order to arm your Proton it must be **ON**. Note that if you do not have deployment power, all of the enabled channels' continuity status will be **NDP** (for "No Deployment Power") since the continuity checking circuitry requires deployment power to perform the check. **You cannot arm the Proton for flight if you see ANY field in **RED**.**

Before you can arm the Proton, any enabled deployment channels must be in a flyable status. This means that if a channel is enabled there must be continuity; if a channel fails the continuity test then you will not be able to arm your Proton. You can tell very easily from the Status page if it's ready to fly, because any failed channels will have the continuity status highlighted in **RED** and any channel with continuity will be highlighted in **AQUA**. Note that if you've selected a servo deployment option for a channel there will be no continuity status indicator; there's really no way to tell if a servo is connected or not, because it's an output-only logic-level connection. It's assumed that they are always in a flyable state.

In addition, your Proton must have been powered up for at least 3 minutes. That's to allow the accelerometer to stabilize, so that when you arm it on the pad it's ready for use. To let you know if the Proton is ready for arming, there's a "Wait to Arm:" time on the Main Status page. It tells you how many seconds you have left before you can Arm the Proton; before that time has expired, the button legend is "REFRESH", because pressing it or entering the arming codes will simply refresh the screen instead of actually starting the arming sequence.

To arm the Proton, enter the 4-digit validation code into the text box then click on the ARM button. After about 5-10 seconds you should see an arming confirmation page:

<b>Proton_2abcd</b>	<b>2.01C</b>
<b>Status:</b>	<b>ARMED</b>
<b>Please CLOSE this Page!</b>	
<b>Battery:</b>	<b>8.0v</b>

This page looks like an abbreviated version of the status page, but the status is changed to "ARMED", it doesn't initially have the validation code/box, and only the battery voltage is

displayed. A few seconds later you should start hearing the buzzer “chirp” rapidly. This is an audible confirmation that the Proton is now in flight sequence mode, and you’re ready for launch. At this point you should CLOSE the browser window on your handheld.

Until the flight actually starts, the Proton will be listening for activity from your handheld. If you refresh this page or re-connect you will see the same page, but with a validation code, text box, and “DISARM” button, as shown below:

<b>Proton_2abcd</b>	<b>2.01C</b>
<b>Status:</b>	<b>ARMED</b>
Validation Code:	<b>8509</b>
<input type="text" value="....."/>	
<b>DISARM</b>	
<b>Battery:</b>	<b>8.0v</b>

This allows you to end the flight sequence in case you have an issue, i.e. you burn an igniter and the rocket doesn’t launch. In that case, you’d perform a disarm prior to approaching the rocket to insert a new igniter, then re-arm it afterwards. Note that refreshing this page will halt the flight sequence for about 5 seconds while it performs processing and updates the statuses, which is why you should close the browser on your handheld after arming. Closing the browser window after arming helps to prevent potential interruptions to the flight sequence. Note that if you refresh the Disarm page without entering a validation code it will force a deployment status and battery check; this is OK if you intentionally want to do this, but remember that it also halts the flight sequence for about 5 seconds, so don’t do it right before launching, and remember to close the browser when you’re done.

See the section titled “Flying With Your Proton” for a further discussion of flight events.

## Auto-Arming Your Proton

If you are using a switch to completely power off the Proton, you may want to have it auto-arm similar to what “other” altimeters do. In general, we recommend using remote arming, but if you have other devices in your rocket you might want to choose the auto-arming option so the arming of all your devices is consistent. This may be true if you’re using a pull-pin switch with dual-altimeters, and the “other” altimeter isn’t an Eggtimer WiFi-enabled altimeter.

To select the Auto-Arm option, go to the Global Settings page, and change the ‘Auto-Arm’ option near the bottom to “Yes”. Note that this does not take effect until the next time that you power-cycle your proton.

When Auto-Arm is enabled, the Proton will start making a short “blip” beep once every 5 seconds after you power it on. This lets you know that it’s waiting for the 3-minute warm-up period for the accelerometer to expire. This DOES NOT mean that it’s ready for flight! If for some reason you want to stop the Auto-Arm process, you simply connect to the WiFi interface; once you do, it will go into the normal Main Status page, where you can make whatever changes you want, and manually arm it for flight if you don’t want to power-cycle it again.

After the three minutes are up, you’ll hear a long beep, then the Proton will go into the normal flight sequence... once you hear the “chirping” beeps then you’ll know it’s ready.

If there is no continuity on a selected output, instead of making the “blips” you will hear a long beep followed by a short pause, which will continue until you either power it off or connect to it via the WiFi interface. Doing the latter will allow you to find and correct the source of the problem; just like interrupting the Auto-Arm sequence, you can manually arm it from there if you wish (assuming you’ve corrected any issues).

## The Deployment Flight Settings Pages

Each of the six channels can be configured to perform in any of several different modes. Some of them are "traditional" in the sense that if you've flown with other flight computers (particularly an Eggtimer Quantum) you'll be familiar with their function. The modes are:

**OFF** - Just what it says... turns the channel off because you're not using it.

**Drogue** - Emulates a traditional drogue chute, firing the channel at some time past apogee. Also supports servo deployments on CH1-CH3.

**Main** - Emulates a traditional main chute, firing the channel at some pre-configured altitude above ground during descent. Also supports servo deployments on CH1-CH3.

**Airstart** - Fires the channel at some pre-configured time after launch detect and a qualifying trigger event (such as motor burnout) has been reached on the way up. Designed for airstarting motors, you can qualify the firing with altitude, velocity, and Barometric-Accelerometer-Deviation, as well as breakwire support.

**Clustered** - The channel is "clustered" with another channel, so when the other channel fires this channel fires too. Designed for airstarting multiple motors, it adds some additional safety options that you would not get by simply hooking up the igniters together. It also allows you to devote a full 10A of current to each igniter, and each channel is individually current-limited and protected instead of divying the current it up among them as it would be if you had them wired in parallel. (Obviously, your deployment battery has to be able to support the extra current!)

When you change a channel from one mode to another, it automatically clears the settings for that channel and sets up some commonly-used defaults. For example, if you change a channel from OFF to MAIN, it will set the channel to fire at 500' AGL, using igniter mode with a 1 second pulse width.

## Changing a Channel's Mode

To change the mode, you click the Mode description link for that channel from the Status page. You'll get a Mode Change screen for that channel:

<b>Proton_2abcd</b> <b>2.01C</b>
<b>Mode Setting</b>
<b>Channel 1:</b>
<b>Mode:</b> Main    v
<input type="text" value="Off"/> <input type="text" value="Drogue"/> <input type="text" value="Main"/> <input type="text" value="Airstart"/> <input type="text" value="Clustered"/>
<b>Submit</b>

Select the mode that you want to assign to that channel (you may have to click on "Done" or "OK" depending on your browser), and click the Submit button. After you do that, you will get the setting screen appropriate for the mode that you selected. Also, when you change modes that channel's settings will reset to the default values for that mode.



## Drogue Settings

The Drogue Settings page is accessed by clicking on the “Change” link next to the Drogue status on the Status page. When you click on the link, you’ll see this page:

<b>Proton_2abcd</b>	<b>2.01C</b>
<b>Drogue Settings</b>	
<b>Channel 1:</b>	
<b>Delay: 0 secs</b>	v
<b>Deploy Mode: Igniter</b>	v
<b>Pulse Width: 2 secs</b>	v
<b>Channel Name:</b>	
<b>Submit</b>	

The purpose of this page is to set the delay from nose-over for firing the drogue, and other related settings. For most dual-deployment flights, you’ll probably want the drogue to fire as close to apogee as possible, in the Proton this would be approximately one second after apogee. That’s what we call “nose-over”, since it’s pretty much guaranteed that your rocket is pointing downward. There’s also a low-velocity check, your rocket has to be going relatively slowly before the deployment channels are enabled. For most flights that will be a second or two before apogee.

In general, if you’re using dual-deployment then you should set this to ZERO. The other settings are designed for delaying the drogue using the Proton as a backup deployment controller in a dual-controller redundant setup, or for special-purpose uses (i.e. the 5-second setting is designed for ejecting ARLISS CanSats... if you're not familiar with them, check out [www.arliss.org](http://www.arliss.org), it's very cool). Typically, the backup controller will have the drogue setting delayed slightly from the primary controller, so that if the primary controller fails the backup will fire and deploy the drogue. You should model your flight with a program such as OpenRocket or Rocsim in order to determine the best delay setting, you want to make sure that the rocket won’t be going too fast before the backup controller deploys the drogue. Typically, 1.0 to 3.0 seconds is adequate.

The fields are:

**Delay (0-30 secs, default is 0):**

Set the time delay from nose-over to deployment.

**Deploy Mode (Igniter/Servo, default is Igniter):**

Selects Igniter mode (on-off) or servo mode (CH1-3 only).

**Pulse Width (Igniter mode only): (1-9 secs, default is 1):**

Controls how long the output will fire in Igniter mode.

**Servo Skew (Servo mode only): (CCW 100%-CW100%, CH1-3 only, def. is 100% CCW):**

Controls how far the servo will move when triggered. When the servo is Reset, it will go in the opposite direction the same amount, i.e. if you have it set to CCW 75% it will go to CW 75% when reset.

**Channel Name: (8 character limit, 0-9, A-Z, a-z, “-“ and “\_”)**

Allows you to set a name for the channel, which will be displayed on the Status Page and the Test Select page alongside the channel number. This name will also be displayed on the header of the detail display CSV download.

**About Servo Mode...**

Servo mode assumes that the servo is going rotate to the selected position relative to the zero-degree center position when actuated, and it's going to rotate in the opposite position by the same amount when reset. Typically, you're going to use some kind of trap-door or pull-pin mechanism, and there needs to be some way to close the door or reset the pin before you fly. That's done with the Test Menu... more on that in the Appendixes.

The servo pulses are sent for 2 seconds, which is plenty long enough for any servo. Once the two seconds are up, no more servo pulses are sent, so the servo basically stays where it is, at the end of its selected travel.

Direction/Skews are in relation to the center point of the servo's travel. Ideally, a servo would have 180 degrees of travel, so full counter-clockwise (CCW) would go 90 degrees to the left of center, and full clockwise (CW) would go 90 degrees to the right of center. The reality is that many servos do not have 180 degrees of travel, so we label them by percent of travel which is ALWAYS related directly to the standard pulse-width of the servos (1.0 to 2.0 ms in a 20 ms window).

This label is the “Set” direction of the servo, i.e. the direction/skew that it will rotate when triggered during deployment. The opposite direction/skew is the “Reset” direction, that's what you will normally use in the Test Menu.

Values are:

100% counter clockwise (CCW)

75% CCW

50% CCW

25% CCW

0% - Center (you can't select this, we just show it for reference here)

25% clockwise (CW)

50% CW

75% CW

100% CW

**Important Note:** If you change a channel from Igniter to Servo deploy mode (or back), the servo direction/skew or igniter on-time settings will NOT be changed. These settings are dependent on the mode that you choose. You **MUST** click on the Submit button to change the mode, **THEN** you need to go back into the channel's settings menu and select the proper on-time or direction/skew. This is because web pages are written when the page is first loaded, so any change you make to that page that's dependent on another setting requires the page to be reloaded.

## Main Settings

This page allows you to set the descent altitude at which the Main chute deploys, or to turn it off if you're not going to be using it. You can set it from 100' to 500' in 50' increments, and 600' to 2,000' in 100' increments.

The Main altitude that you use depends on a lot of things: the size and layout of your flying field, how much wind is present, how many trees there are around you, the size of your rocket, and not the least, how far you're willing to walk to retrieve your rocket. 500' is the default setting when you first power up your Proton, it's adequate for probably 80% of all flights. If your field is smaller or if there's a fair amount of wind, you're going to want to take that down a bit, so your rocket doesn't drift as far when the Main is deployed. If you have a big project, you may want to turn that up a bit, since you may not want a larger rocket deploying that close to the ground and the larger chute may take more time to open. If you're not sure what setting to use, ask your buddies at the field... it's guaranteed that they will have an opinion on the subject!

To change this setting, click on the drop-down list and scroll to the setting that you wish to set. Depending on your browser/OS, you will either click on it or click a "Done" button to select it. Click on the Submit button to save it, and you will be returned to the Status page. An example of the page is shown below.

<b>Proton_2abcd</b>	<b>2.01C</b>
<b>Main Settings</b>	
<b>Channel 2:</b>	
<b>Altitude: 500</b>	v
<b>Deploy Mode: Igniter</b>	v
<b>Pulse Width: 2 secs</b>	v
<b>Failsafe: Time 1.0</b>	v
<b>Vel. 100</b>	v
<b>Channel Name:</b>	
<b>Submit</b>	

### **Altitude (100'-2000', default is 500') :**

Deployment altitude for the event. When your rocket descends from nose-over to this altitude or below, the channel will fire.

**Deploy Mode (Igniter/Servo, default is Igniter):**

Selects Igniter mode (on-off) or servo mode (CH1-3 only).

**Pulse Width (Igniter only, 1-9 secs, default is 1 sec):**

Controls how long the output will fire in Igniter mode.

**Servo Skew: (Servo Only, CCW 100%-CW100%, CH1-3 only, default is 100% CCW)**

Controls how far the servo will move when triggered. When the servo is Reset, it will go in the opposite direction the same amount, i.e. if you have it set to CCW 75% it will go to CW 75% when reset.

**Failsafe Time (OFF, 0.3-3.0 sec, default is OFF):**

Controls the time for the failsafe check (see below).

**Failsafe Vel. (50-300 fps, default is 100 fps):**

Controls the velocity for the failsafe check (see below).

The Failsafe mechanism is designed to help prevent your rocket from coming in ballistic due to drogue parachute failure. Your descent velocity is monitored from the time that nose-over occurs. If the descent velocity exceeds the Failsafe Velocity parameter for the Failsafe Time period, the channel will fire as configured. The idea is that if your drogue chute doesn't deploy, your main will be deployed at a relatively low velocity somewhat near apogee, preventing your rocket from coming in at very high speed. Yes, it's going to cause your rocket to drift a lot more than a normal drogue-main deployment would, but that's better than having your rocket impact the ground at high speed, and/or having an expensive main chute shred because the deployment velocity is several hundred feet per second, and still having a high speed ground hit.

The proper values of the Failsafe parameters will depend on the size of your drogue chute (or lack thereof if you're going drogueless), the size of your Main chute (if it's large you may want to deploy it a little slower to avoid damaging it), the size/weight of your rocket (smaller lighter paper rockets will fall slower), and how your other channels are set. If you are going to use it, 100 fps for 1.0 sec is a good starting point assuming a standard dual-deploy rocket with a drogue chute with a 50-70 fps descent rate. Note that if you have multiple channels set to Main Mode, you can enable Failsafe for more than one of them, we recommend that they're separated by at least 0.5 secs to prevent overpressurizing your main chute payload pay (assuming you're using multiple charge wells).

**Channel Name: (8 character limit, 0-9, A-Z, a-z, “-“ and “\_”)**

Allows you to set a name for the channel, which will be displayed on the Status Page and the Test Select page alongside the channel number. This name will also be displayed on the header of the detail display CSV download.

## **Airstart and Clustered Settings**

Airstart and Clustered modes are typically used for firing motors or separation charges while the rocket is moving "up". There's a lot of complexity that goes along with this, so see Appendix B for a thorough discussion of Airstarts and the Clustered mode.

## The Global Settings Page

The Global Settings page is used to change settings that are either hardware-specific or are not generally changed from flight to flight. You get into this page by clicking on the “Settings” link on the Status Page:

<b>Proton_2abcd</b>	<b>2.01C</b>
<b>Global Settings</b>	
<b>Launch Detect Alt:</b>	<b>200 v</b>
<b>Launch Samples/Sec:</b>	<b>20 v</b>
<b>Descent Samples/Sec:</b>	<b>2 v</b>
<b>Accel LDT:</b>	<b>0.5 sec v</b>
<b>Accel LDG:</b>	<b>3 G's v</b>
<b>Auto-Arm:</b>	<b>No v</b>
<b>Call Sign:</b>	
<b>Flight Comments:</b>	
<b>Submit</b>	

### **Launch Detect Altitude (LDA) (50'-500' by 50', default 200')**

This setting allows you to select at what altitude the Proton decides that a valid flight has started. The 200' default is good for most flights. However, there may be some cases in which you may want to turn it up, and some very special cases in which you may want to turn it down.

If your flying site is subject to wind gusts, you may want to turn it up a bit so that when the wind gust subsides the decrease in pressure isn't viewed as the rocket ascending. That's not likely to happen, however, because we filter the readings to prevent this (and other similar occurrences). You may also want to turn it up if you increase the Launch Samples per Second.

If you have a very low flight you may want to turn it down, although generally we don't recommend it because it's safer to have it at least at the 200' default.

### **Ascent Samples per Second (10,15, 20, 25, 30, 33 samples/sec. , default 20 samples/sec.)**

This setting allows you to select the number of samples per second that are taken from the time that you arm the Proton until it detects nose-over. The default setting (20 samples per second) is adequate for most flights. However, there may be reasons why you want to turn it up or down. For example, if you have a very short-burn motor (like a CTI V-Max) you may want to turn it up to 33 samples per second to make the velocity and acceleration figures more accurate. If you have a very long-burn motor you may want to turn it down to 15 samples per second, although 20 should be fine. Note that increasing the sample rate decreases the amount of memory at the expense of flight data accuracy... more on that later.

### **Descent Samples per Second (1, 2, 4, 5, 8, 10 samples/sec, default 2 samples/sec.)**

The setting allows you to select the number of samples per second that are taken after nose-over is detected. When you're coming down, you're generally not going to be going very fast relative to your velocity going up, even if you freefall for a few seconds and the FailSafe kicks in. Consequently, there's really no reason to have the same high rate of sampling that you use for the ascent part of the flight. Reducing the sampling rate after nose-over saves a lot of memory, and allows you to record longer flights. For most flights, the default 2 samples/sec. rate is fine. If you are going over 20,000' you may want to take this down to 1 sample/sec... the reduction in data accuracy by reducing the sampling rate is minimal.

### **Accelerometer Launch Detect (ALD)**

**Accel G's: (OFF, 3-20, default 3G)**

**Accel Time: (0.2 - 2.0 sec, default 0.5 sec)**

These settings control the accelerometer launch detect. When the G threshold has been reached/exceeded for at least the configured time, a launch detect is triggered and the launch mechanisms begin. Note that launch detect occurs when EITHER the barometric LDA altitude OR the ALD is triggered; the first one to trigger a launch detect starts the flight process. If you're at 50' AGL and you hit the 3G/0.5s threshold, your launch detect altitude will be 50'.

For most flights, the default of 3G for 0.5 sec will be fine. This is high enough that it's unlikely to be accidentally triggered, and low enough that almost any motor is going to trigger it. There are a few exceptions of note, however. First are motors like the CTI VMax motors, which produce a very high amount of thrust for a very short period of time. For those motors, we recommend setting the time to the minimum (0.2 sec) and setting the G's to a higher than normal value... 10 G's should work in most cases. For relatively low thrust motors, we recommend that you turn it OFF, and let the barometric launch detect trigger the launch. We've seen some very underpowered rockets that never made it to the 3G threshold. In those cases, the barometric launch detect triggered the flight-detect.



Note that events triggered from the Start of Flight are NOT triggered directly from these points. Rather, they're back-dated to either the last sample under 10' AGL, or the last sample under 1G acceleration. It is assumed that whichever one of these came later is an accurate start of flight.

**Auto-Arm (No, Yes, default No)**

This field controls whether auto-arming is enabled. See the section on arming for flight for a further discussion of this field.

**Call-Sign (Text box, 8 characters maximum, default blank)**

This field is sent out along with the EggTimer Telemetry data stream, the intent of this field is that if you are using the 70cm Ham version of the EggTimer Telemetry Module this will satisfy the FCC requirement that your call sign needs to be sent out “periodically” with the transmissions. If you are using a 70cm ETM, put your FCC-assigned call sign here. Allowable characters are 0-9, a-z, A-Z, “-“, “\_”, and “.”. Spaces are not supported... we recommend that you enter a period in its place.

**Flight Comments (Text box, 30 characters maximum)**

This field allows you to enter comments for your flight. This is handy if you have a number of flights and you want to note what rocket/motor it may be. Allowable characters are 0-9, a-z, A-Z, “-“, “\_”, and “.”. Spaces are not supported... we recommend that you enter a period in its place. We recommend that you enter your rocket name, motor, and maybe some other identifying information, something like “Punisher3-J145LBSK”. This field is displayed at the top of the Status Page, and also at the top of the Flight Summary page.

## About Sampling Rates and Memory Usage

At this point you may be wondering about how long a flight the Proton can record before running out of memory, and what happens if that occurs. The Proton saves about 2,000 samples for each flight. When you're sitting on the pad or launched and have not yet reached LDA, the sampling rotates through those memory locations, saving the last altitude reading < 10' AGL as the barometric "start of flight", and the last accelerometer reading under 1G as the accelerometer start of flight. Once you get a launch detect, the recording continues until either 1) the End of Flight is detected, or 2) the memory wraps around to the start of flight location. In either case, recording stops there (it won't overwrite valid ascent data), but this does NOT affect any pending deployment events... if you run out of memory before the main chute is deployed, it will still be deployed, but you won't see it in the data downloads because it can't be recorded.

Now, you may be wondering how long a flight you can have with "only" 2,000 memory locations. Quite a long one, actually. Let's say that you want to fly to 30,000' and your motor will get you there in 30 seconds. At 20 samples per second, that's 600 samples. That leaves about 1,400 samples left for the "down" part of the flight. At 2 samples per second, that's 700 seconds, or over 11 minutes. You'd have to be coming down at a rate of about 40 ft/sec under drogue to exhaust the memory, there's no way you're gonna be coming down that slow from 30,000' (unless you really like walking a lot). More likely, it's going to be 50-70 feet/sec. Let's say that we come down at 60 ft/sec from 30,000', that's about 500 seconds, or 1,000 memory locations at 2 samples/sec. You'd still have over 400 samples left when you land, nearly 20% of your memory.

If you have an extreme flight, say 50,000', it may take a bit longer to get up there, let's say 45 seconds. That's 900 samples, leaving 1100. If you take the rate down to 1 sample per second (reasonable since the events are happening relatively slowly and the air is pretty thin at 50K), you still have 1100 seconds, or over 18 minutes. No way it's gonna take that long to come down, unless for some reason the main comes out near apogee. At a conservative 50 ft/sec average speed under drogue, it's going to take 1,000 seconds, leaving you with at least 100 samples. Remember that at that altitude the air is very thin, so you're going to be coming down faster near apogee than you will be when the air thickens as you descend. It's very likely that you're going to be using a lot less memory than that.

So, as you see, there's plenty of memory for just about any flight scenario if you manage it wisely. For just about any flight under 30,000', just leave it at the default 20 samples per second for the Launch rate and 2 samples per second for the Descent rate, and you'll be fine.

## The Flights Page

Clicking on the Flights link takes you to a page that allows you to select a flight for flight milestone display, and download a detailed .csv file that you can use with Excel or other data analysis programs to extract graphs and do other fun things. We'll go into that a bit later...

## Flying with Your Proton

The Proton is very simple to operate. In general, a dual-deployment flight with the Proton will look something like this:

### At your Work Table

- Charge or swap out your battery/batteries and check it with a DVM to check the voltage  
**DON'T SKIP THIS STEP!**
- Install your igniters with the deployment power switch off (if used), with NO powder.
- Connect your battery to the Proton.
- Turn on your deployment power switch (if used).
- Connect to the Proton and confirm that you have continuity on all selected outputs (unless they're set for servos). If you don't, disconnect the batteries and figure out why.
- Check your settings, especially the deployment channel settings
- Close up the AV bay
- Turn OFF the deployment power switch (if used)
- Add powder to the charge wells, and finish prepping your rocket

### At the RSO Table

- Get your rocket safety-checked, get your pad assignment, and swagger out to the pad. Note that your Proton will beep shortly once every 60 seconds that it's powered on, as the web page refreshes. You may need to show your RSO the Status Page on your phone to show him that it's disarmed if he's not familiar with the Proton, since most Altimeters only beep when they're armed.

### At the Pad... Arming Your Proton

#### If you're remotely arming the Proton with your phone...

Put the rocket up on the rail/rod, raise it, then go to the Proton's status page. If you're using a deployment power switch, turn it on. Make sure that you have continuity on whatever channels you're using... if you do not, it's going to be easy to tell because the status will be highlighted in **RED**. If it's OK, it will be either **AQUA** or **GRAY**.

Assuming that all settings are **AQUA** or **GRAY** and none of them are **RED**, enter the validation code into the box and click on the SUBMIT box. After entering the arming code, click on the ARM button. Note that if less than three minutes have elapsed since you last powered on the Proton, you will have to wait for the "Wait to Arm" period to expire before you can enter the arming code.

After a second or two you should then see the "Armed" page. Once that happens, **CLOSE THE WEB PAGE**. Closing the page prevents any data from interfering with the flight sequence.

## **IMPORTANT:**

**NEVER “SWIPE” YOUR PROTON PAGES TO “CLOSE” THEM... YOUR DEVICE LEAVES THEM OPEN. GO TO THE “x” AND ACTUALLY CLOSE THE PAGE. SIMILARLY, DO NOT REFRESH A PAGE USING THE BROWSER’S REFRESH BUTTON, IT WILL RESUBMIT THE PAGE AND IT IS POSSIBLE FOR UNINTENDED CONSEQUENCES TO OCCUR.**

After a few seconds, you’ll hear a few beeps, then after about 10 seconds of silence (as it takes baseline measurements) you’ll hear the “I’m ready” sound, which is a rapid “chirping” of the buzzer. Connect your igniter, test the continuity, then go back to the safety zone to await your flight.

### **If you’re Auto-Arming the Proton...**

Put the rocket on the rod/rail, raise it vertically, then power on the Proton. You should hear a short “blip” beep once every 5 seconds... this will last for 3 minutes, after which time the Proton will give you a long beep then start the “ready for flight” chirping. **DO NOT LAUNCH UNTIL THE “BLIPS” STOP AND YOU HEAR THE RAPID CHIRPING!**

If for some reason the Proton is NOT ready for flight, you will hear a long beep followed by a short pause, continuing until you either power it off or connect to it via the WiFi interface. At this point you’ll probably end up taking it off the rod/rail in order to fix the problem...

If you’re new to dual-deployments, you can see that it’s a lot more involved than just stuffing some wadding and the parachute into the tube, popping in the motor, and hooking up the igniter. Multiple deployments require discipline in order to make them work reliably; we’ve seen way more than our share of failed deployments, on everything from a small mid-power E-size rocket all the way up to an M-sized 200 pound beast. We’ve seen deployments fail with the top-end flight computers and with the low-cost units, even with redundancy. The reality is that most deployment failures are not the fault of the electronics; it’s usually something mechanical like a bad connection, a nose cone that’s too tight, a chute that gets stuck in the tube, inadequate deployment charge sizing, etc. Having your blood, sweat, and tears free-fall from 10,000’ bury itself in six feet of dirt is going to ruin your whole day.

We **STRONGLY** recommend that you use a checklist every flight so that you don’t forget anything. We also recommend that you get a copy of the book Modern High Power Rocketry, it’s full of good information too, and subscribing to a forum like The Rocket Forum ([www.rocketryforum.com](http://www.rocketryforum.com)) is a really good idea, too. There are a lot of people out there who will be more than happy to answer any questions you have.

### **In the Air...**

Once your rocket is launched, barometric altitude and accelerometer samples are taken at whatever ascent rate you’ve selected, typically 20 samples per second. These samples are run through a filter to eliminate “noise” that may be caused by a number of different factors, primarily aerodynamic but also some external factors such as wind and temperature.

Velocity readings are computed based on the difference between successive accelerometer samples over time, as well as the difference between successive barometer altitude readings over time. In a perfect world, this would give you a precise and 100% accurate velocity reading. The reality is somewhat different, however. There are several things that can introduce errors into the velocity reading: angle of attack, wind, errors in the pressure readings due to aerodynamic influences, and time differences. If the pressure ports in your payload bay aren't sized properly, this can introduce an error, particularly if they're too big and you have two of them opposite each other (you'll get a crossflow through the payload bay which makes the pressure readings very noisy). Finally, differences in the processor's timing may introduce errors, although the readings are taken at relatively precise intervals so it's going to be very small.

The good news is that the magnitude of these errors tend to be proportionate to velocity as the rocket ascends, so they respond well to being filtered with mathematical noise filters. Velocity-related events are run through a digital filter to smooth out any sharp peaks or valleys that may develop due to pressure-induced noise.

## **Mach Transition...**

As your motor continues to burn and the velocity increases, if the velocity exceeds about 800 ft/sec aerodynamic shock wave buildup can fool the pressure sensor into thinking that the rocket is descending when in fact it is actually ascending at a rather rapid speed. If this were not taken into account, the flight computer might deploy the main parachute at near-mach speed, which would undoubtedly break something and ruin your day, not to mention what an object falling from the sky at these speeds could do.

To prevent this from happening, the Proton uses a predictive mechanism to hold off deployments until it's safely out of the mach "danger zone". Deployments are initially disabled when the Proton is armed. When the noise-filtered barometric velocity drops below 100 ft/sec for at least 1 second after the Launch Detect Altitude has been reached, deployments are enabled. Typically, this will be a second or two before apogee, although it may be a little later in some cases (i.e. a very draggy rocket). In any case, it guarantees that your rocket isn't going very fast when the drogue deployment occurs, which is the ultimate goal. This is the same logic that we've used for several years with all Eggtimer Rocketry altimeters, and in many thousands of flights we've never heard of a zipper due to an early/late deployment that wasn't due to the rocket going horizontal (or a motor-eject backup charge firing early).

## **Apogee and Nose-Over**

Assuming that your rocket is moving more or less straight up, it will continue to slow down during the coast phase until it gets as high as it's going to go. If the rocket was going absolutely straight up, the velocity at this point would be zero; it would simply start falling to the ground. In reality, this almost never happens, because for safety you usually angle the rod/rail at a slight angle so that the rocket takes off away from the flight line. This results in the velocity disparity that we've previously mentioned. The rocket usually has some forward velocity at apogee; hopefully it's relatively small

so your parachute deployment happens at a low velocity and won't cause any mechanical problems like a broken shock cord or a zippered tube. It also means that you really don't know that you've reached apogee until *after* you've been there.

Accordingly, the Proton fires the drogue parachute at Nose-Over, which we define as one second past apogee (highest recorded altitude). If the rocket is still going up, chances are that its altitude is going to keep increasing before a one second interval elapses, so you're unlikely to get a false apogee detection. If the rocket hasn't gained any more altitude after one second then you must be starting on your way down, so the Proton fires the drogue at that point, for one second.

When Nose-Over is detected, the Proton begins using the Descent Samples value for altitude sampling. This setting is very low, typically 2 samples/sec... as we mentioned earlier, when you're moving relatively slowly there's no point in taking readings at a higher rate, because there's so little difference between them that all it does is waste memory. As the rocket descends, when the AGL altitude drops below the Main deployment altitude the Main channel is triggered. At this point your Main chute should pop out, to thundering applause and a hearty round of high-fives all around.

## On the Ground

The Proton detects that your rocket is on the ground when the barometrically-detected AGL altitude varies by less than 30 feet for over 5 seconds. (This mechanism accounts for landing on an area higher than your launch ASL altitude, and also landing in trees.) Once on the ground, the Proton will start beeping out the maximum altitude continuously for anyone within earshot to hear. The beeps work like this:

1 Beep = 1  
2 Beeps = 2  
.....  
9 Beeps = 9  
10 Beeps = 0

So, if you fly to 12,360' you will hear:

Long Pause...  
Long Beep... ("I'm going to give you're the apogee reading...")  
Short Pause...

1 Beep (10,000')  
Short Pause

2 Beeps (2 x 1000')  
Short Pause

3 Beeps (3 x 100')  
Short Pause

6 Beeps (6 x 10')  
Short Pause

10 Beeps (zero 1' reading)

<long pause>

<sequence repeats>

The beeps continue until you turn off the power, and also act as a verification that you had a successful flight, but getting your rocket back in one piece pretty much told you that, didn't it?

In addition, the WiFi interface will start back up again, and if you connect to it at the default URL it will take you directly to the Flight Summary page for the flight that you just completed. Note that it may take 10-15 seconds to bring up the Flight Summary page after you connect to the Proton, because it sends out the page after it's done beeping out the altitude, so you have to wait until it goes quiet for a few seconds. Once you the connection, you'll get the Flight Summary page that you see below. Note that this is a "dead end" page... you cannot go back to the normal Status Page or any other Proton page. This is because once your flight has ended, it's assumed that you're going to take it back to your work table to open up the AV bay and disconnect/recharge the batteries, replace the deployment charges, etc.

## Post-Flight Analysis

The Proton saves your last 14 flights' data: settings, summary data, and detail data. Clicking on the 'Flights' link in the Proton's Status page takes you to an index page that allows you to select the flight that you want to review. Note that each flight has an index number from 1-14, this is the memory location that it's in, and each flight has a Flight number that is sequential from 1 to however many flights you've had with your Proton. If you fly it enough, you'll probably get to the point at which flights drop off, and the flight numbers won't start with 1 anymore, but the indexes will always be from 1 to 14. Your Proton will roll the flights over to the oldest memory location as necessary.

Each entry in the Flight Select page shows the Flight Index, the Flight Number, the Apogee, and a 'More' link that takes you to the Flight Summary page. Note that after you land and while it's beeping out the altitude, it will take you directly to the Flight Summary page for that flight only.

### The Flight Select Page

You can view the last 14 flights by selecting them from the Flight Select page, you get there by clicking on the "Flights" link from the Status Page. It shows you the Flight Index (the location in memory, 1-14, "Idx"), the Flight Number (which increments every time you start a flight, "Flt"), the Apogee of the flight if the flight reached launch detect, and a link to display the Flight Summary/Detail for that flight ("More") if the flight reached launch detect. Note that if a flight never reached either the launch detect altitude or time/G threshold (such as a "test arming") no detail data will be available.

Proton_2abcd	2.01C
<b>Flight Select</b>	
Idx: 01	Flt: 1 No LDA <a href="#">More</a>
Idx: 02	Flt: 2 Apogee: 1827 <a href="#">More</a>
Iex: 03	Flt: 3 Apogee: 3875 <a href="#">More</a>
Idx: 04	Flt: 4 Apogee: 5202 <a href="#">More</a>
Idx: 05	Flt: 5
Idx: 06	Flt: 6
Idx: 07	Flt: 7
Idx: 08	Flt: 8
Idx: 09	Flt: 9
Idx: 10	Flt: 10
Idx: 11	Flt: 11
Idx: 12	Flt: 12
Idx: 13	Flt: 13
Idx: 14	Flt: 14
<a href="#">Exit</a>	



## The Flight Summary Page

The Flight Summary page gives you a lot of information about what happened during your flight. You get there by clicking the Flights link from the Status Page. After you land, you can also connect to it... the Proton will show you only the status for the current flight, plus the detail, until you power-cycle it. Here, we'll click on Flight #2, the one with 1827 as the apogee...

Proton\_2abcd 2.01C

### Flight Summary

Flight No.: 2  
Proton.test.K600

Flight Status: Landed

Apogee:.....1827  
Time to Apogee.....2.85

Max Velocity.....372  
Time to Max Velocity.....1.25

Max Accel.....10.2  
Time to Max Accel.....0.25

LD Alt.....334  
Time to LD.....0.05

Nose\_Over Alt.....1778  
Time to Nose-Over.... 4.05

### Boost #1

...@Time: 0.05 secs  
...@Alt: -1 ft  
...Duration: 1.20 secs  
...Avg G's: 4.3  
...BO@Time:: 1.25 secs  
...BO@Alt: 267 ft

### CH1: Drogue

FiringStatus:  
Fired OK  
Altitude: 1778  
Time to Firing: 4.05

```

CH2: Main
Firing Status:
  Fired OK
  Altitude: 496
  Time to Firing: 11.55

Flight Time:.....14.55
ASL Alt.....1041
Temp F.....68.1

Exit   Detail   Settings

```

**Flight Status** – What the last major event was. Typically it will be “Landed”, but it may be something else if there was an anomaly in your flight.

**Apogee** – What the apogee of your flight was, and the time-to-apogee from launch detect (LD).

(About the elapsed times: To detect start-of-flight, the Proton uses the first reading above the Accel Launch Detect G's threshold, before the LDA has been reached. While it's technically possible that this figure may be a little off, our experience has shown that it's only off by one or two samples at most... typically under 100 ms.)

**Max Velocity** – The maximum velocity that was reached, and the time from LD. This data comes from the accelerometer, so it is very accurate, and not affected by the rocket's tilt angle or wind, etc.

**Max Acceleration** – The maximum acceleration that was reached in flight, in G's. With one motor it will probably be within a few seconds of the Start of Flight, if you have a multiple stage or airstarted motor system then it may occur somewhat later depending on your motor choices.

**LD Alt** – The actual altitude that exceeded the configured launch detect settings, and the time from LD. If the altitude is less than the configured LDA altitude (as it often will be), you can assume that LD was due to the accelerometer settings.

**Nose Over Alt** – The altitude at which the rocket nosed over, typically one second past apogee, and the time from LD.

**For each detected motor Boost/Burnout...**

- ...@Time – The elapsed time at which the boost started.
- ...@Alt: - The altitude at which the boost started.
- ...Duration – The length of the boost (elapsed time from boost to burnout).
- ...Avg G's – The average number of G's that the rocket experienced during the boost.
- ...BO@Time – The elapsed time at which the burnout occurred.
- ...BO@Alt – The altitude at which the burnout occurred.

## For each enabled channel...

**Channel Mode** – The selected mode of the channel.

**Firing Status** – Whether or not the channel was commanded to fire, and why not if it did not fire (i.e. “Fired OK” if everything was fine, “Not Fired” and “Altitude < 400’ if the channel didn’t fire because the rocket hadn’t reached the channel’s minimum altitude of 400’).

**Channel Time** – The time from Start of Flight that the channel was fired OR would have fired if not inhibited

**Channel Alt** – The altitude at which the channel was fired OR would have fired if not inhibited.

**Flight Time** – The elapsed time from LD until landing detect, which is when the rocket’s altitude changes by less than 30’ for 5 seconds (i.e. when it first stops moving).

**ASL Alt** – The Above-Sea-Level reading of your launch site.

**Temp** – The temperature in Fahrenheit at the time of launch. Note that this is the temperature of the sensor... on a warm day this may appear to be significantly hotter than your air temperature, since it’s sitting in a confined space. This will be especially true if your rocket is painted a dark color.

As you can see, that’s a lot of stuff to look at. Particularly right after landing, it gives you a pretty good idea of what happened. For example, we did a test in which we intentionally didn’t install a drogue charge and left out the motor eject, and turned on FailSafe as a test. (We don’t recommend that YOU do this, though...) We expected the Main to pop 3-4 seconds after apogee, but that didn’t happen, instead it came out at about 500’ as if there was a drogue. When we looked at the Flight Summary data, it turns out that it never fell fast enough to trigger FailSafe... it was a light Estes rocket on an Aerotech F24, and the drag was enough to slow it down below the threshold. This was not the expectation we had going into the test flight, but the data allowed us to see exactly what happened.

We’ve had other flights in which we had FailSafe enabled as a safety measure, and it triggered when we thought that it should not have. Turns out the drogueless rocket fell faster than we expected... obviously we should have modeled it better! All of this data can tell you a lot... and help you model your later flights better so your actual flight matches your expectations.

## Viewing the Flight Settings

To see the flight settings that were used for this flight, click on the Settings link at the bottom of the Flight Summary page.

<b>Proton_2abcd</b>	<b>2.01C</b>
Flight Settings	
Flight No.: 2	
LDA Alt.....	200 ft
Launch Samp/Sec.....	20
Nose-Over Samp/Sec....	2
Accel LD Time.....	3 sec
Accel LD G's.....	3 G
CH1: Drogue	
Delay.....	0.0 sec
On-Time.....	1 sec
CH2: Main	
Alt.....	500 ft
Deploy.....	Igniter
On-Time.....	1 sec
Failsafe:.....	1000 ms
FS Velocity.....	100 fps
CH3: OFF	
CH4: OFF	
CH5: OFF	
CH6: OFF	
<a href="#">Exit</a>	

As you can see, they're the same settings from the menus... no further explanation necessary.

## Downloading the Flight Detail

In addition to the Flight Summary data, each altitude sample during flight is saved into memory, and the data can be retrieved and time/event correlated as a standard comma-separated-variable (.csv) file by clicking on the 'Detail' link at the bottom of the Flight Summary page.

A .csv file is basically just a text file, with commas separating each field. Depending on what apps you have on your device, it may do one of three things when you click on the Detail link:

- 1) It may display the data as if it were a text-only web page
- 2) It may open up some kind of application (i.e. Excel if you have a laptop)
- 3) It may just sit there and hang because it doesn't know what to do with it

Note that if you download the data on your phone, it may be a little difficult to see. That being said, we HAVE done it with an iPhone after installing WPS Office (the default on an iPhone is to display it as a web page). The advantage is that you can literally get a graph of your flight as soon as you get back to your work table with your rocket and open up the AV bay (you'll need to reset the power after the flight, remember?) The disadvantage is that the screen is too small to be really useful, even if you zoom in.

Note that it can take some time (over a minute or two in some cases) to download the detail data, because of the "on-the-fly" formatting. When you're downloading the data, the little blue LED on the WiFi module next to the antenna will blink... that's a sign that it's working.

If you want to look at the data directly on your phone, we've had good luck with WPS Office for Android and iOS, it's free and works very well with the simple .csv data that the Proton sends out, and it's very easy to get a flight/event graph. For a Windows laptop, we use Excel, but any data analysis program that can take a .csv file will work.

Each entry in the flight detail file looks like this, of course there's a comma between each field...

**T** (time) – Seconds from Start of Flight (SOF)

The next two fields are barometer-derived...

**Alt** (altitude) – the RAW pressure-derived altitude value from the altimeter

**Veloc** (velocity) – the RAW velocity for that sample, derived from the difference in altitude between this sample and the previous sample and the time interval between them

The next set of fields are accelerometer-derived...

**Accel** (acceleration) - the RAW acceleration value from the accelerometer, in G's

**AccelFPSS** (acceleration) - the accelerometer data in ft/sec<sup>2</sup>

**VelocAcc** (velocity) - the velocity derived from the accelerometer in ft/sec

**AltAcc** (altitude) - the DISTANCE TRAVELED derived from the accelerometer in ft.

Then you will see the FILTERED values from the baro pressure sensor...

**FAlt** (filtered altitude) – the FILTERED pressure-derived altitude value

**FVeloc** (filtered velocity) – the FILTERED barometric velocity for that sample, derived from the difference in FILTERED altitude between this sample and the previous sample and the time interval between them

Following that data are the events. Event data is ZERO unless the sample triggers the event, in which case it's the RAW altitude data, since these events theoretically should occur at a relatively low velocity (sub-mach transition). This format causes a scatter graph of the data to show a little spike where the event occurs, which is a very easy and convenient way of viewing where the event occurred. Note that the non-filtered barometric altitude is used as the marker value... if you are viewing this from a scatter graph vs. Time, you will see a "spike" at the time of the event. Note that the altitudes are generally baro-based, unless listed differently below.

**LDA** – Non-zero at the sample when launch-detect occurs (either accelerometer or baro-based)

**MaxV** - Non-zero at the sample when maximum velocity is achieved (accelerometer-based)

**MaxA** - Non-zero at the sample when maximum acceleration is achieved (accelerometer-based)

**For each Boost/Burnout that was detected (1 to 6 boost/burnouts):**

**Boost#n and BO#n** – Non-zero at the sample where a motor boost/burnout is detected

**Apogee** – Non-zero at the sample when apogee is reached

**N-O** – Non-zero at the sample when Nose-Over is reached, typically one second past apogee

**CH1-CH6** – Non-zero at the sample when the channel is first triggered

Due to the many programs that can be used to view/manipulate this data, we're not going to go into what you should do to graph/view it... we recommend that you check the documentation for your data analysis program for that information. Suffice it to say that you can get some pretty good graphs out of a standard spreadsheet program like Excel, using a scatter graph (Time vs. parameters).

## Appendix A – Remote Deployment Channel Testing

The Proton has some special testing functions built in, in particular you can test the deployment channels with your battery and igniter combination to make sure that when it fires you aren't going to get any nasty surprises (such as the igniter not firing because the battery can't source enough current). You can also perform a "live" charge test, to make sure that your rocket's payload section will separate properly and that the parachute will exit the payload tube. This is a valuable test... we don't know how many times we've seen deployments fail because the parachute got stuck in the payload tube.

### Deployment Channel Testing

Whenever you try a new type of igniter and/or battery, you should test them together by doing a deployment channel test. This ensures that your battery and igniter combination will work during a flight... you don't want to find out that there's an issue afterwards!

Note: Do NOT perform tests with a live charge until you have become familiar with this procedure, and are at a safe distance away from the rocket! We recommend 30' to the side... the range of the Proton's WiFi outdoors is well over 100', so you can step away from your rocket safely while performing a live deployment test.

There is a special URL that is used to connect to the test page, which is not accessible from the normal pages. This has been done so that you cannot accidentally put it into test mode while your rocket is sitting on the pad or your workbench.

To get to the test page, open your browser in "private" or "incognito" mode, and in the address box enter:

**192.168.4.1/test**

(If you have the Status Page open, you must CLOSE it before you open the Test Page, or the timed refresh from the Status Page may interfere with your test.)

Note: We do NOT recommend that you bookmark this page, or any other page having to do with deployment testing.

### **IMPORTANT:**

**NEVER "SWIPE" YOUR PROTON PAGES TO "CLOSE" THEM... YOUR DEVICE LEAVES THEM OPEN. GO TO THE "x" AND ACTUALLY CLOSE THE PAGE. SIMILARLY, DO NOT REFRESH A PAGE USING THE BROWSER'S REFRESH BUTTON, IT WILL RESUBMIT THE PAGE AND IT IS POSSIBLE FOR UNINTENDED CONSEQUENCES TO OCCUR.**

You will see the following page:

<b>Proton_2abcd</b> <b>2.01C</b>
<b>Channel Test Select</b>
Select    v
Validation Code: 2231
_____
<b>TEST</b>
Battery: 8.2

This is pretty explanatory... there's a pull-down to select the channel that you want to test, then you simply enter the 4-digit validation code and click on the TEST button. The channel settings are inherited from the channel's setting page... for example, if you have a channel set to be used in igniter mode with a 3-second firing time then that channel will fire for 3 seconds. Channels that are set to OFF will not display, since there are no settings to use for testing. This means that you must enable a channel and set it properly in order to get a deployment test... you don't need to test a channel if you're not using it, do you?

**IMPORTANT SAFETY NOTE:**

**DO NOT USE THE BACK ARROW WHEN IN THE TEST PAGE, AND YOU MUST BE IN PRIVATE/INCOGNITO MODE IN THE BROWSER ON YOUR DEVICE.**

If you set a channel up for servo deployment, it will use the same servo direction and direction/skew that was configured in Global Settings, but you will see a FORWARD and a REVERSE option. Forward moves the servo in the configured direction; Reverse rotates the servo in the OPPOSITE direction by the configured skew amount. The RESET function can be used when you're at your worktable to close up the deployment bay... typically, servo deployments use some kind of trapdoor system so you'll generally need to rotate the servo in the opposite direction to close it up after you pack the parachute. You generally don't want to do this by manually moving the servo's output wheel, since that can strip the gears.

If you have a channels clustered to an Airstart channel and fire the configured Airstart channel, it will also fire any clustered channels as well. That allows you to test your battery with all the igniters that you're going to use in flight. If you select only the clustered channel (not the configured Airstart channel), it will fire only that channel. If you want to test the "master" Airstart channel by itself, turn OFF the clustered channels first.

After you enter the validation code and click on the TEST button, you'll see a count down screen from five to zero seconds, after which time it will trigger the deployment device. When it's done, it goes back to the Deployment Test page.



If for some reason you need to abort a test, all you need to do is to close your browser BEFORE it counts down to zero. After you close it, you should open the Status Page; re-opening the test page immediately after closing it may cause it to be resumed from that point, depending on how your browser caches pages. Using private/incognito mode should prevent those pages from being cached, but it doesn't hurt to be extra cautious.

Note: **NEVER** do a deployment test with just a piece of bare wire, you need to have some kind of resistive load such as an ematch, igniter, or small piece of fine nichrome wire (#36 or #40, for example). If you do, you may blow out the output drivers or the FET, although the drivers are designed to shut off in the event of a dead-short or an overcurrent condition (over 10A). We've designed the Proton very conservatively, and the drivers provide current limiting to help protect themselves and your battery. Nevertheless, it is still possible to blow something up if you try hard enough.

# **Appendix B: Using the Proton for Airstarts**

## **A Brief Word About Airstarts...**

The techniques in the manual are intended for use by experienced rocketry hobbyists, generally with a NAR or TRA high-power certification. A lot of the discussion assumes that you have some experience with electronic deployments, high-power rocketry building techniques, the basic physics of rocketry flight, and a good working knowledge of the safety procedures involved in flying high-power rockets. It is not a complete course in these subjects, nor can any short manual like this be.

We strongly recommend that if you do not have experience in electronic deployments that you tackle that first **BEFORE** you try airstarts. A lot of things can go wrong with airstarts, even with low-power motors. Remember that **YOU** are responsible for **YOUR** actions and the consequences thereof. We help provide you with the tools you need for your projects, but it's up to **YOU** to know how to use them correctly.

## **An Overview of Airstarts and the Eggtimer Proton**

One of the coolest (and most complex) things you can do in hobby rocketry is to electronically ignite a motor while you're in flight. This is called an "airstart". Airstarts are typically of two types... you can ignite extra motors while in flight, or you can have multiple stages and separate/ignite them in flight. These have different flight characteristics and requirements, but from the electronics point of view it's the same... you're triggering something at a certain time in the flight while going up. That's a much different requirement than a deployment controller, which typically will trigger something (generally, parachutes) while you're going down, generally at a relatively slow velocity.

The Eggtimer Proton performs this function by acting as a timer, triggered by the same launch detect mechanism as the deployment functions (Launch Detect Altitude, or Accelerometer Launch Detect). Since the Proton keeps track of about 2,000 altitude/accelerometer readings prior to reaching LD, it "knows" when you actually started the flight by seeing when you first started moving off the pad, so it can accurately time your flight from that point. That time is the Start of Flight, of SOF.

Each output channel on the Proton can act as an independent timer, triggered by the SOF. They can be used for igniting a motor, firing a charge to separate stages, or just about anything else you can think of. Since these functions may have some serious safety ramifications (i.e. you don't want a high-power rocket motor firing when you don't want it to fire) there are several safety features and qualifications built into the Proton's airstart software. Those are discussed below.

In addition to the timer functions, you also get the usual Proton features... 14-flight memory, remote WiFi interface for configuring, arming/disarming, downloading, and testing, and your choice of single or dual battery operation. Since the Proton uses a unique dual-ended deployment circuit, the airstart igniter is basically "dead" until you arm it, and you're well into

the flight. It's considerably safer than arming an airstart controller with a switch of some sort, because you can do it remotely from over 100' away if you wish, without having to stick your face right next to the rocket to turn on a switch while standing on a ladder and hope the motor doesn't fire.

**Note: This Appendix is not meant to be an exhaustive description of all of the Proton's features and its operation, it's a supplement to the Eggtimer Proton User's Manual, specifically addressing the airstart functions. You need to read the User's Manual before you read this one, common functions (such as connecting to the WiFi interface) and wiring/mounting not directly related to airstart use are NOT covered in this manual!**

## Selecting the Airstart Option

To put a channel into Airstart Mode, select the **Airstart** option from the Mode dropdown menu (you may have to click Done on some platforms), then click on the Submit button. Note that when you do this, it clears any options that you have previously selected and sets them to the default for the Airstart Mode. It will then take you to the Status Page.

## The Airstart Settings Page

After you set a channel's mode to Airstart, you will see a Settings link next to the default timer setting. To make changes to the settings, click on the link; you will see this page.

<b>Proton_1Cbcd</b>	<b>2.01C</b>
<b>Airstart Settings</b>	
<b>Channel 3:</b>	
<b>Delay: 2.2 sec</b>	<b>v</b>
<b>From: Burnout#1</b>	<b>v</b>
<b>Velocity: 300 fps</b>	<b>v</b>
<b>Check: @Trigger</b>	<b>v</b>
<b>Altitude: OFF</b>	<b>v</b>
<b>Deviation: OFF</b>	<b>v</b>
<b>Pulse Width: 2 secs</b>	<b>v</b>
<b>Channel Name:</b>	
<b>Submit</b>	

The fields are:

**Delay (0 - 30 sec, default 2.0 sec):**

The delay between when the trigger event occurs and when the channel fires.

**From: (LDA, Accel, Burnout #1-#6, default Burnout#1):**

Selects which trigger event starts the timer. LDA causes the timer to start when the LDA altitude has been reached, Accel causes the timer to start when the Accelerometer launch detect has been reached. See the Global Settings section for a discussion of the difference between the two.

You can also select the timer to start after a motor burnout has been detected. A burnout detection is triggered when the rocket's positive acceleration (in the "up" direction...) decreases to below 1.0G after a "boost" event has been detected (which is dependent on the positive acceleration value for a period of time, depending on the amount of the acceleration). The Proton can sense up to SIX burnouts, so you can trigger on up to six events. Note that if you fire a motor based on a non-burnout event (i.e. LDA) while another motor is still firing, this will probably appear to be a single boost event because the acceleration never drops below 1.0G, so your Burnout #2 event may never be triggered.

For most two-stage rockets, you can generally set your sustainer (and separation charge, if you use one) to fire after Burnout #1, which is the default. We've tested this extensively with a wide variety of motors, and it's pretty much a dead accurate method of firing right after the booster motor stops. If you're not staging but instead lighting other motors after one burns out (i.e. a rocket with a single 54mm motor and multiple 29mm's surrounding them, typically in a cluster), you can use the burnout detection along with the clustered settings to guarantee that all of motors will only fire after burnout of the center motor and if there's continuity on all the other igniters.

For two-stage rockets, we generally recommend that you use a short delay from the triggering event for lighting the motor, and that if you use a separation charge that you have a one second or more delay between the separation charge and the sustainer motor ignition. This is to allow any residual pressure from the separation charge to dissipate before you light the igniter... if you fire them at the same time, the separation charge might snuff out the igniter and prevent the motor from lighting.

**Velocity: (OFF, 100-800 fps, default OFF):**

The MINIMUM velocity that must be reached in order to fire the channel. The default is OFF, i.e. don't use this check. If your rocket does not meet the minimum velocity at the time of firing, the channel will not fire and an entry will be logged to let you know that it was because of the velocity qualification failing.

**Check (@Trigger, Anytime, default @Trigger):**

When to check for the Velocity threshold. @Trigger is the default, it checks it ONLY at the time of the timer expiration; if you're not going that fast at that time, the channel will not fire. "Anytime" means that if the velocity threshold is reached anytime prior to the timer expiration it will fire the channel.

**Altitude (OFF, 100-10000', default OFF):**

The MINIMUM altitude that must be reached at the time of the timer expiration for the channel to fire. The default is OFF (don't check).

**Deviation (OFF, 5%-30%, default OFF):**

Selects the allowed deviation between the barometrically computed altitude and the accelerometer's integrated distance, for off-axis detection. See the discussion below.

**Pulse Width (1-9 secs, default 1 sec.):**

Controls the width of the pulse sent to the deployment channel. If you're using an ematch or an ematch-derived igniter, you can safely set it to 1 second... ematches typically fire in a few hundred milliseconds, at most. If you have a nichrome-derived igniter, you may want to set it to two or three seconds, or even more... you can easily test your igniter with the test feature (see the Appendix).

**Channel Name: (8 character limit, 0-9, A-Z, a-z, “-“ and “\_”)**

Allows you to set a name for the channel, which will be displayed on the Status Page and the Test Select page alongside the channel number, and on the heading of the Flight Detail CSV download.

## Setting Up Two-Stage Airstarts with Your Proton

Before you do anything, you MUST use some kind of simulation program to map out the flight, so that you have a very good idea of what altitude and velocity your rocket will be attaining at three critical points: booster motor burnout, separation, and sustainer motor ignition. Knowing when these should occur is the key to a successful two-stage flight.

### Booster Motor Burnout

This is when your booster motor's thrust stops. Every motor has published thrust curves that give you that exact information, you can get them either from the manufacturer's web site, a third-party web site like [thrustcurve.org](http://thrustcurve.org), or from the data sheet that's typically include with the motor. Note that these figures are averages based on tests of a number of samples; they are “typical” values, not absolute. Because of that, we strongly recommend that you add 20% to the typical figure, so you have a “worst case” value to work with.

### Separation

This is when you want the booster stage to separate from the “stack”. Typically, you will want to do this before you fire the sustainer's motor, because the smoke and fire from the sustainer's motor can do significant damage to the coupler. However, if this is an acceptable risk (maybe you have some kind of liner in the coupler, or it's replaceable) then you may actually want the motor blast to separate the stack.

There are three ways of doing a separation: drag separation, separation charge (or a variant of it), and motor separation. With drag separation, the coupler is fit relatively loosely into the sustainer, with the idea being that when the booster motor burns out the resultant negative acceleration and the higher drag on the booster will be enough to pull the booster apart. This works best for boosters with large fins and/or which are of a significantly larger diameter than the sustainer; for example we've done it with a Rocketry Warehouse Double Shot which uses a 4" booster with a 54mm motor, and a 54mm sustainer with a 38mm motor. The booster is much larger than the sustainer and has large fins, so it drag separates well.

We've already mentioned motor separation, so we won't elaborate on that further except to say that it works well but tends to cook the inside of your interstage coupler, depending on the motor that you're using in your sustainer. If you decide to do that, you might want to think about putting some kind of replaceable lining inside the coupler, and possibly fill it with some "dog barf" wadding too.

Finally, there's the separation charge method. With a separation charge, you use a pyrotechnic charge to forcibly separate the stages. Typically, this is done shortly after motor burnout, but before your sustainer ignition. The trick is that you don't want the separation charge to pop the stages apart while the booster is still firing, so you need to give it a little extra time from your booster's burnout time. You also have to wait a little bit to fire the sustainer motor if it's an AP motor, because the pressure generated by the separation charge can snuff out the sustainer's igniter; the pressure has to subside first before you ignite the sustainer. You must also be careful to make sure that the separation doesn't happen while the booster motor is still burning; if it does, it can knock the sustainer (and possibly the booster) off-axis.

### **Sustainer Motor Ignition**

This is the paydirt, when you light your sustainer motor. As has been mentioned previously, the ideal situation would be that it happens after the booster motor burns out, you separate the stages, and you wait a short time for the separation pressure to subside.

The reality is that this can be a tricky value to come up with. Black powder (Estes) motors igniter almost instantly, but high-power AP motors can take awhile to light and come up to pressure. The amount of time that this takes is highly dependent on the propellant formula and the igniter; "white" or "blue" propellants tend to light relatively fast (maybe about one second), and "red" or "green" propellants tend to take a few seconds to light. Since it's difficult to predict the actual time that the motor will light, it can be a little difficult to precisely model the flight. Fortunately, a delay of a second or two usually doesn't matter, and in fact will translate to additional altitude since the rocket will be moving at a lower velocity when the sustainer motor ignites, with a resultant reduction in drag. In fact, the maximum altitude for a given set of motors can usually be obtained by delaying the sustainer motor ignition for several seconds and allowing the rocket to coast. There are some issues with doing that... more on that later.

### **Locating Your Electronics**

Before you start building your two-stage rocket (or in some cases, before you start planning it) you need to figure out where the separation and airstart electronics are going to go. There are several ways of doing it:

- Sustainer ignition in the interstage, motor-ignition separation, motor deploy for the booster chute
- Sustainer ignition and electronic booster chute deployment in the interstage, motor-ignition separation
- Separation and booster chute deployment in the interstage, sustainer ignition in the sustainer's AV bay
- Booster chute deployment in the interstage, sustainer ignition and separation in the sustainer's AV bay

You would also add whatever electronics are doing deployments for your sustainer, of course, and if it's a big project you probably want to have redundancy on all of the deployments. This can get complicated. In general, you can usually do motor deployment for the booster, since they typically slow down relatively quickly once they separate. It never hurts to have BOTH motor deploy and electronic deployment for the booster.

Doing sustainer motor ignition in the interstage makes the build easy, because you don't have to run any wires through the sustainer and you don't have to figure out how to make the wire disconnect when the sustainer's drogue fires. You just mount your Proton in the interstage (with a suitable bulkhead, of course!), and you can use the drogue channel for the booster's chute deployment at nose-over if you wish. The problem is that you pretty much HAVE to do separation by motor ignition... if it drag separates or you fire a separation charge you'll pull your igniter out of the motor before it lights. You'll want a relatively snug fit between the interstage coupler and the sustainer, you might even want to use shear pins (although we haven't tried it...). If you do this, use a relatively gentle motor (10:1 thrust:weight ratio or so)... in general, we don't recommend using high-thrust motors like a CTI VMax in two-stage rockets anyway. High thrust motors can make the sustainer jam in the interstage coupler... if your motor fires and does NOT separate, you're going to have one heck of a pile of fried fiberglass coming down.

From a safety point of view, having the stack come apart early isn't a bad thing, because the sustainer not lighting if there's a problem is always an acceptable safety option... everything just comes down on chutes and you try it again with another booster motor. There's also no igniter left in the sustainer motor, so it's basically inert. Just make sure that you have some way of getting both pieces down safely.

We've found that it's more flexible (although more complicated) to do the separation in the booster using a separation charge in the interstage coupler, and to place the airstart electronics in the sustainer. This makes it somewhat easier to do parachute redundancy for the booster, you can use a single Proton in the booster for the separation charge and chute at nose-over, and use the booster's motor ejection as the backup for the chute. If the booster drag separates (intentionally or otherwise), your sustainer is still going to light because the igniter isn't tied to the interstage. You can use higher thrust motors with this configuration, maybe 15:1 or so, and your rocket is most likely going to go straight where it's pointed. Just don't use really high thrust motors like a VMax... we'll tell you why later.

The complication with doing this is that you need to either have the electronics somehow located near the motor so that you can run the wire to the igniter (easy for a large build, harder for a minimum-diameter build), or run a tunnel inside the body tube from the AV bay to the motor's nozzle end and have some kind of break-away electrical disconnect so that when the drogue fires the wire comes apart without fouling the drogue shock cord and parachute lines. Small Molex

connectors can be used for this... just don't expect them to last for more than one or two flights before you have to redo them, because the pins tend to get pulled out and the little tabs that hold them into the connector tend to break. You also have to be careful that they don't get separated during the boost, but you don't want to tape them together either or they won't come apart when they should. Taping each end to the inside of your body tube (or the AV bay bulkplate) usually fixes that.

If you also do the separation in the sustainer's AV bay, you'll generally need to run TWO pairs of wires down the body tube, and have TWO break points when the drogue side of the AV bay separates. Obviously, this adds more complication. If you can do the separation in the interstage, it makes things quite a bit easier on the build.

If you put the sustainer ignition in the sustainer AV bay, you'll need to have whatever normal deployment electronics you build would use. The Proton has six channels, so chances are pretty good that you'll have plenty of channels to go around. It also gives you the opportunity to have some deployment redundancy, assuming you put a second altimeter in the AV bay (like an Eggtimer Quantum, for example). In general, we recommend that you have redundancy in at least your drogue. If your main chute gets jammed or you have a bad ematch or for some other reason it doesn't come out, if you land under drogue the landing will be a bit hard but it generally doesn't cause serious damage. If your drogue doesn't come out... you're coming in ballistic. Ouch. Even if your main chute fires on cue, you're going to be going so fast that it will tear up the chute and maybe take 100 ft/sec off your velocity because there's not enough time for the rocket to slow down before it hits the ground because you're moving at ft/sec or so. Trust us... we know. Better our rockets than yours...

If you do NOT have redundancy on the Drogue chute, we recommend using the Failsafe option on your Main chute configuration. If your Drogue fails, then the Main will pop somewhere close to apogee, and prevent your sustainer from coming in ballistic. Yes, it will drift for awhile... but that's what you got an Eggfinder tracker for, right? 😊

## **A Word About Motor Selection**

As we have mentioned several times, you MUST run a simulation on your airstarted flights. That's the only way to really get an idea of what the delay times need to be, and how high it's going to go, and what the velocity at sustainer ignition is going to be. This is particularly important for long-burn motors in the sustainer. We've used them, and they're very cool, but you have to make sure that the rocket is pointed "up" before you light them, so ideally you want to have plenty of velocity when you light it up.

In general, we recommend that your booster motor should have at least a 10:1 thrust:weight ratio at launch. Assuming that your rocket is stable (and a typical long and skinny two-stage rocket tends to be a bit overstable), it's going to go straight up, and it will be pointing up when the sustainer fires. Long-burn motors in the booster won't get the air flowing over the fins and any disturbance (wind, slightly misaligned fins) can make your rocket point off-axis and possibly lead to you chasing your sustainer for a very long distance. We're talking miles for a J or bigger motor in the sustainer. If you want to use a long-burn motor in the sustainer, go on the large side for the booster... we've used a K805 to J94 in the Double Shot, for example (4" to 54mm, total flight-ready weight about 16#).



As we have mentioned before, we do not recommend the use of extremely high-thrust motors like CTI's VMax or Aerotech ST's for two stage rockets, particularly for the booster. One reason is that the sustainer tends to be fairly heavy, and the shock of high thrust motors can cause the sustainer to jam in the coupler. As was mentioned earlier, this is not a good thing. Also, there is a much higher chance of fins shredding off, and the sustainer's igniter being pushed away from the top of the grain by the G forces. All good reasons to avoid these motors for the booster. If you want to try one in the sustainer... well, it would be interesting.

If your booster motor is going to get you reasonably close to Mach 1 before separation, we recommend that you increase the sampling rate from the default to 25 or 33 samples/sec. This will improve the accuracy of the timer's baro SOF detection mechanism (although chances are excellent that the accelerometer's LD will kick in first anyway). Also, if your simulation shows that the velocity at the LDA altitude (normally 200') is above 700 ft/sec, we recommend that you lower the LDA so that it occurs at a lower velocity. This is unlikely to happen with motors in the recommended thrust:weight ratio range of 10:1 or so, but it's something you need to be aware of. You can also use the accelerometer launch detect or the burnout detection as the triggering method, which aren't dependent on barometric altitude detection.

## Using the Proton for Airstarting Clusters

Another cool thing you can do is to have a cluster of motors in your rocket, but instead of lighting them all on the pad you light some of them in the air. Some rockets lend themselves to doing this... anything with sidepods, for example (think Titan IIIC or Falcon Heavy). You can use this to get some neat effects, like having a “sparky” main engine with “smokey” airstarted motors. You can also use it to get the rocket going with a higher thrust main motor then airstart some long-burn motors in the air.

You’ll notice that we say “motors” and not “motor”. That’s because when you airstart a cluster, you’ll always need more than one motor, symmetrically arranged around the center. Otherwise, when you light them the rocket will go very nicely off-axis for a long, long ways, possibly heading into the ground. That’s also the primary risk factor with an airstarted cluster... that one or more of the motors doesn’t light. We’ve had it happen, and although the resulting power prang from low altitude is spectacular to watch we do not recommend it! For safety sake, you need to use motors that light easily, and/or a really good igniter. CTI motors with the black powder pellet in the top grain are a good choice, as are white/blue/smoky motors. Most long-burn motors work fine, too. Avoid colored motors (red/green/pink), they generally take awhile to light and/or come up to pressure. Using a “dipped” ematch as the igniter helps a lot for ensure that your clustered motors light quickly and reliably... we’ve used Firefox’s H3 and QuickBurst’s ProCast dips, they both work fine.

The setup for the Proton is the same as you would use for lighting the sustainer of a two-stage rocket, except you don’t have a separation charge. That leaves another channel free for something else, possibly redundant igniters or a charge that releases the pods after burnout (you’d use motor deploy for their chutes). As with a two-stage build, you need to simulate everything thoroughly to make sure that you have the correct timing (and altitude/velocity if you’re using the qualifications).

## Using the Altitude and Velocity Qualifications

One thing that the Proton can do that most simple airstart timers can not is to qualify an ignition using barometric altitude or velocity. This allows you to pretty much ensure that your rocket is pointing “up”, because those qualifications can only happen if your rocket doesn’t have a significant horizontal component. This is useful for motors with a lower thrust:weight ratio, or if you’re using a long burn sustainer motor and you absolutely want to make sure that it only lights near vertically.

There are basically two reasons why you want to make sure your sustainer fires while pointing near vertical. The first one is that if your sustainer fires off—axis, it’s going to go a long ways away from you. This means that you’re going to have to drive or walk for awhile, or even worse, you might lose your tracking signal and have a very long hunt. Not good. The second, and more important reason, is that you don’t want the sustainer firing if it’s not pointing “up”. If you have a shred and your sustainer is pointing down when it fires, that’s a huge safety issue.

So, to prevent that from happening you want to make sure that it’s firing while pointing “up”. The most basic way of doing this is to make sure that your rocket has sufficient stability, and is built sufficiently for the motor that you’re using. That’s another reason why we don’t recommend using very high-thrust motors for two-stage builds... they tend to make parts fly off the rocket. If your motor has a 10:1 thrust:weight ratio and at least 2C stability at launch, then your rocket is going to go straight up and you’ll be fine. If your motor has a little less punch (i.e. it’s a long-burn) or the rocket’s stability margin is a bit less, then you might want to think about implementing a velocity or altitude qualification.

To use these qualifications, you need to take your simulation, using the burnout, separation, and motor ignition figures that you found earlier. Don’t forget to figure in the amount of time that the motor takes to light into your motor ignition figure... it’s usually at least one second, but it can be longer for some motors. If you aren’t sure, ask around... chances are pretty good that the members in your TRA or NAR club will have lots of advice on this. Also, be sure to add in values for the rod/rail angle, and your expected wind, and don’t be afraid to get a few different values of each in case the conditions change during launch day. The Proton’s WiFi interface makes it easy to change these values right before you fly, so there’s no reason not to get it right.

Once you have those numbers, take a look at the predicted altitude and velocity that your rocket will be moving when the IGNITER fires, NOT when your motor will actually light. THAT is what the qualification will be based on. What you are going to do is to take the altitude/velocity value at the ignition time, and figure out how much you are willing to deviate from those before you decide not to light the motor. In general, you don’t want to ignite the sustainer if it’s more than 20 degrees from vertical. That’s why we recommend using a booster motor thrust:weight ratio of at least 10:1... it generally keeps your rocket pointing wherever the rod or rail is pointed. Assuming that’s the case, the difference would be 20 degrees minus whatever angle your rail is pointed at. For a close approximation, figure 1 percent for every degree, so for a 5 degree rod/rail angle that’s a 15 percent variation.

So, you simply reduce your projected sustainer ignition altitude or velocity by 15 percent, and use that as the value for your qualification. Note that these are going to be processed in the Proton using the filtered value, which lags behind the “real” value by about ¼ second, so you’ll want to take that into account too.

For example, let's say that you have the rail set to 5 degrees, and with your expected wind the altitude at ignition is 1200' at 4.0 seconds. You've chosen a fast-lighting motor, so the ignition will happen at maybe 3.0 seconds, and the simulation says that it will happen at 800' going at about 400 ft/sec. Take another ¼ second off the time, so you're looking at 2.75 secs, the rocket was at 700' going just above 400 ft/sec (it's not doing to slow down much in ¼ second...). Take 85% of the 700' that you expect the ignition to be triggered at, so that's 595 feet. We'll use 600' as the qualification. Similarly, if you want to use velocity rather than altitude, take 85% of the 400 ft/sec, that's 340 ft/sec, so we'll use 350 ft/sec as the value. You will want to set the qualification so that it is effective "@Timer", i.e. it does the check when the timer expires.

Remember how we told you earlier not to use high-thrust motors for two-stage builds? This is another reason why. When you get near Mach 1, the pressure buildup drops the perceived altitude (and also the perceived velocity) so the Proton "thinks" that it's going lower and slower than it actually is. You're more likely to have a failure to trigger the sustainer igniter due to a failed qualification with high-thrust motors, one more reason to avoid them.

Now, if your motor isn't quite so high-thrust but burns long enough that your rocket may hit Mach on the booster before the motor burns out, you probably don't need to use the qualifications. It's pretty hard to get too far off-axis when you're going that fast, and if you go unstable you'll never get that fast. However, it is still possible to use the qualifications as long as the timer starts at LDA (and almost all motors will). To do that, you'll use the "Anytime" qualification option, and use the velocity qualification, setting it to a lower value than you might expect to see at your expected ignition altitude, typically something around 700 ft/sec. What this means is that if the rocket achieves this velocity ANYTIME between the start of the flight and the ignition, it will assume that you're going fast enough to be vertical. That's a pretty good assumption if you KNOW that your booster motor is going to get you near Mach 1.

Another good reason to use the altitude/velocity qualification is if you're going for the absolute maximum altitude you can get out of a given set of motors. Contrary to intuition, that's not achieved by firing the sustainer right after the booster; it's achieved by waiting until the rocket has slowed for some time. We've done some simulations and seen some maximum altitudes with the sustainer firing when the velocity was under 200 ft/sec... that's a lot of slowing from the 800 ft/sec that the booster got it up to. Obviously, if you wait a long time to light your sustainer the chance of it going off-axis due to wind effects goes up, so an altitude or velocity qualification is a really good idea.

This brings up the issue of whether it is better to separate early or coast with the booster still on if you're going to coast for awhile after burnout. In general, if your booster is the same diameter as your sustainer, you should hang onto it because the extra mass will reduce the deceleration after burnout without causing a significantly higher drag penalty. If your booster is larger (i.e. RW/Madcow Double Shot, 4" booster and 54mm sustainer), the sooner you ditch it the better, because that booster will be a big drag on the sustainer. Again, doing a good simulation with Open Rocket or Rocsim is your best bet, but you'll probably find these guidelines to be pretty accurate.

## The Deviation Qualification

One unique feature of the Proton is the Barometric:Acceleration Deviation qualification. During flight both the filtered barometric altitude and filtered acceleration-integrated distance are computed.

Hobby rocketry flights are meant to be flown near-vertical, with maybe a small angle away from the flight line for safety. Theoretically, your rocket is pointed up and keeps going up. If you're doing an airstart, you want the motor to fire as close to vertical as possible, to prevent the rocket from going horizontally under power. If you've ever had to chase an errant two-stager, you know what we mean.

Barometric altitude computes the vertical distance from the ground, whereas the measurement derived by integrating the accelerometer is actually the total distance that the rocket has traveled, independent of path. If the rocket is going "up" and straight, the two should be fairly close, if your rocket has tilted over, is corkscrewing, or for some other reason isn't going straight then they will deviate significantly from each other. It's natural to have them deviate a bit from each other since they're from two different sources and derived differently, however if they deviate by more than 10% or 15% that probably means that the rocket isn't pointed "up".

The Deviation percentage allows you to specify how far the barometric and accelerometer derived distances can differ, if you have this turned on and they deviate more than this percentage then the channel won't fire. Although not as accurate as a full 9-DoF IMU, this is a pretty decent indication if you're not pointed "up". If you want to use it, we recommend that you start with about 20%, you can get the actual deviation percentages from the Flight Detail graph to refine it later on, by comparing the FAlt (filtered barometer altitude) with the AccelAlt (accelerometer altitude) parameters. Note that it is not 100% accurate, so we recommend that you go a little high on your initial flights using the Deviation, maybe 25%, so you can see what the actual values in flight turned out to be.

Note that the barometer data tends to be fairly "noisy" due to a number of factors. A fairly aggressive noise filter is used prior to comparing to the accelerometer data, but there are some flight scenarios that tend not to work very well with this approach. For example, a very high thrust and short burn motor (i.e. CTI's VMax series) can boost the rocket faster than the pressure in your AV bay can equalize with the normally optimal vent holes, causing the barometric altitude change to lag begin the accelerometer-computed distance. If your vent holes are too large (for example, you have multiple access holes for a Schurter screw switch drilled into the switch band), the baro data may be so noisy that it's almost useless for this purpose. If you do have large screw switches, we recommend that you cover up the holes with tape before flying, and drill the appropriate sized vent holes (don't use the screw switch holes as vent holes).

## Using the Hardware Breakwire Function

One of the features of the Proton is hardware breakwire. This means that you have a physical connection of some sort that must be broken in order for the channel(s) to fire. Most commonly, breakwires are used to test that the booster has physically separated from the stack, although we have seen them used to detect that the rocket has cleared the pad. This can be some kind of wire loop or connector, or a microswitch that is opened before the test. The Proton can use a breakwire to qualify any airstart-enabled channel, however there is only one breakwire input, which is shared between all channels.

The Proton's breakwire function requires a normally-closed switch, to use it you connect two terminals from the Proton to your breakwire switch. One of the wires is soldered to the BW pad, and other wire is soldered to the adjacent GND pad on the Proton. The Proton's software reads that connection when an airstarted channel is triggered, and if the breakwire state is not consistent with the configuration of that channel it will prevent the channel from being triggered. If you enable the Breakwire function on a channel, the switch (or whatever mechanism you use) must be OPEN (i.e. "broken") to trigger a positive Breakwire check.

We recommend that you use #24 AWG wire or smaller to connect the BW/GND pads to your switch or whatever else you use for the Breakwire, there's very little current passing through these wires so the gauge is unimportant but you don't want to use a large wire and make it harder to solder or possibly cause a short on the board.

When the breakwire is being used, the Proton will not arm if it sees that it's OPEN, and the channel won't fire if it sees that it's still CLOSED. The classic breakwire is attached to the pad somehow, and is used with the sustainer motor to prevent it from firing until the rocket has left the pad, but there are lots of other things you could do.

Some ideas for the breakwire:

A wire loop in the sustainer with a disconnect in the interstage to confirm separation

A microswitch against the rod/rail that's closed while it's on the pad to prevent arming off the pad

For an interstage-mounted igniter, you could use one between the interstage and the booster, to make sure that the interstage hasn't drag-separated from the booster and caused a premature booster parachute deployment

# Eggtimer Proton Airstart Quick Reference

## General Rules for Successful Airstarts

- SIMULATE EVERYTHING FIRST!!!
- Your booster motor's thrust:weight ratio should ideally be 10:1 to 15:1
- Your separation time should be at least 120% of the motor's burn time.
- You should fire the sustainer's igniter at least ½ second after separation, longer is OK.
- Don't use high-thrust short-burn motors like VMax's in the booster.
- If you expect your booster to get you near Mach, increase the sample rate and reduce the LDA altitude to ensure that the timer is triggered, or trigger on Burnout or Accel LD
- Use an altitude or velocity qualification if your booster motor's thrust:weight is < 10:1 or your stability is < 2C, or if you're waiting an extended amount of time before firing the sustainer motor.

## Proton Airstart Channel Functions

### **Airstart Timer:**

Values: 0.0 - 3.0 by .1 secs, 3.2-9.8 by .2 secs, 10-30 secs by 1 second  
Controls when after triggering the timer will fire the channel

### **Airstart Min Alt:**

Values: OFF (default), 300'-3000' by 100', 3200'-9800' by 200'  
Controls the MINIMUM ALTITUDE that must have been reached for the channel to fire

### **Airstart Alt Chk:**

Values: @Timer (default), Anytime  
Controls when the ALTITUDE CHECK is performed:

- @ Timer: When the timer expires
- Anytime: Anytime up to when the timer expires

### **Airstart Min Vel.:**

Values: OFF (default), 100-1000 fps by 100 fps, 1200-2000 fps by 200 fps  
Controls the MINIMUM VELOCITY that must have been reached for the channel to fire

### **Airstart Vel. Chk:**

Values: @Timer (default), Anytime  
Controls when the VELOCITY CHECK is performed:

- @ Timer: When the timer expires
- Anytime: Anytime up to when the timer expires

### **Airstart Pulse Width:**

Values: 1-9 sec (default 2 sec)  
Controls the amount of time that the channel fires

### **Airstart Use BW:**

Values: NO (default), Yes  
Controls whether or not the hardware breakwire is tested at firing time

## Appendix C - Using Servos with the Proton

The Proton can modulate standard PWM hobby servos for parachute deployments, for use with non-pyrotechnic deployments. Typically, these will be some kind of “trap door” mechanism that’s released by pulling out a pin. If you go very high, over 30,000’, pyrotechnic charges lose much of their efficiency, because the reduced air pressure requires a larger amount of generated pressure to achieve the same force against the nose cone (or AV bay, for a drogue). Black powder charges also have a harder time lighting too, because the thinner air inhibits the transfer of heat between the grains. With a trap door, it’s altitude-independent; once you pop the door, the parachute is going to come out, especially if you have some kind of spring mechanism to push it out.

Also, some very large rockets do not lend themselves very well to pyrotechnic deployments, and minors cannot legally use pyrotechnic deployments. For example, NAR ARC teams are allowed to use multiple deployments, but they cannot use pyrotechnics. The Proton’s servo support is ideal for these scenarios.

The Proton provides native support for servos on CH1-CH3, in the Drogue and Main modes. This means that you can only use a servo "on the way down", which is pretty typical of what people want to do with them. You can not use a servo with Airstart mode, since it's not designed for triggering on descent.

There are three dedicated pads on the Proton for the CH1-CH3 servo connections, at the lower-center of the board next to the deployment terminals. Those outputs are at a 3.3V logic-level rather than at the high-voltage level typically used by ematches/igniters. To connect a servo, you need to first identify the 3 leads on the servo:

Power – Provides Positive battery power to the servo (usually red)

Ground – Provides Negative battery power to the servo (usually black)

Signal – PWM signal input to the servo (usually white)

If you’re not sure which lead is which, check with your servo manufacturer’s support web site. Not every servo has the leads in the same order, or using the same colors, but they all use the same three leads.

To use a servo, you will need to provide power to the servo, and connect the Signal and Ground leads to the Proton. Typically, the Signal lead will connect to the Servo output of the Proton, and the Ground lead of the servo (which should also be connected to your servo battery's "-" lead) should be connected to a ground point on the Proton; the "G" pad of the Servo pads is ideal for this. We recommend that you connect a resistor in series with the Servo-Signal lead to help prevent noise... 220 ohms is ideal. Note that the servo pads and their holes are smaller than the other pads, they’re designed to take a 1/8W resistor directly.

For most applications, we recommend that you use a separate battery to power the servo, rather than using the same battery that your Proton is using. This prevents any servo motor "noise" from getting back into the circuitry of the Proton. Most hobby servos are rated for 5V nominally, however they work great with 6V and many of the “micro” size servos will work with a single 1S 3.7V LiPo battery too. Check the specs on your servo for the appropriate power. In



general, you should use whatever battery you would if the servo was going into a R/C model; most of the time a 600 mAH 4.8V or 6V NiCad, NiMH, or LiFe pack will suffice. If you're not sure what battery to use, ask your local hobby shop; they probably know more about R/C servos than you'll want to hear.

At this point, bring up your Proton, go to Settings and set the channel you're using for servo deployment, then go back into the Settings page and select the direction and skew. You should now be able to go into the Deployment Test page and move the servo. If not, check your wiring.

## Appendix D - Browser Notes

### **IMPORTANT:**

**NEVER “SWIPE” YOUR PROTON PAGES TO “CLOSE” THEM... YOUR DEVICE LEAVES THEM OPEN. GO TO THE “x” AND ACTUALLY CLOSE THE PAGE. SIMILARLY, DO NOT REFRESH A PAGE USING THE BROWSER’S REFRESH BUTTON, IT WILL RESUBMIT THE PAGE AND IT IS POSSIBLE FOR UNINTENDED CONSEQUENCES TO OCCUR.**

Here are some notes regarding browser compatibility. They may or may not apply to your platform... there are a LOT of different hardware/software combinations, particularly with Android.

### **Apple IOS**

Newer versions of IOS (since 14.2) may generate a message “weak security” when you connect to the SSID. This is because the WiFi connection uses TKIP encryption, an older version which is highly compatible with just about everything. It won’t keep you from connecting, it’s just an advisory message.

Also, newer versions of IOS assume that if you have a WiFi connection that it must be to get onto the Internet. This is not true of the Proton, of course. If you get a message that notifies you that you do not have an Internet connection and asks if you want to connect to your cellular data connection, you need to tell it to “Keep using WiFi”.

### **Android**

Newer versions of Android may assume that if you have a WiFi connection that it must be to get onto the Internet. This is not true of the Proton, of course. If you get a message that notifies you that you do not have an Internet connection and asks if you want to connect to your cellular data connection, you need to tell it to “Keep using WiFi”.

We recommend using Firefox with Android instead of Chrome, it seems to be faster.

### **Windows**

If you’re using Windows, we recommend that you use Internet Explorer if you can, or Firefox. You may also have to change some hardware settings on your WiFi device so that it works with 802.11g connections with TKIP encryption; some updates may change your drivers so that they will only work with newer AES encryption by default. You may need to set your connection to “maximize compatibility with older devices”.

### **WiFi Connection Tips**

1. After you turn on your WiFi Switch or arm your EggTIMER WiFi altimeter, CLOSE the browser, and go to your Settings and turn OFF WiFi on your phone. This does wonders... believe me.
2. Make sure you're in Private (Apple) or Incognito (Android) mode... you don't want it saving the pages and caching it later.

3. The ONLY shortcut you should save is the Home page URL... <http://192.168.4.1> . Do not save any URL with anything after the IP address.
4. Do NOT use the back arrow for these pages. We disable caching on the pages, but it's up to the browser to enforce that... and they do not always do it.
5. If your phone gives you a popup telling you that you don't have Internet connectivity, tell it to KEEP the connection, and DO NOT switch to cellular data.
6. If you use a VPN for security, turn it off while you're connected to the Eggtimer WiFi devices. You can't get on the Internet to use it anyway.
7. If all else fails, turn off cellular data on your phone while you're using your Eggtimer WiFi devices.

## Appendix E – Recovering the Passkey

Like any secured WiFi network, you need two things to connect... the SSID and the passkey. The SSID of your Proton will be "Proton\_nnnnnn" where nnnn is the last 6 hexadecimal digits of your device's MAC address (a unique address given to every Ethernet device). The SSID is broadcast, so you should be able to see it in your device's WiFi manager.

The passkey is an eight-digit number generated by a random number algorithm the first time that your Proton is powered on, and is saved in EEPROM memory at that time. It's going to be unique for every Proton. There should be a label on the little baggie that the WiFi module came in with the passkey (you kept it, right?), but it's easy to get it if you lose it...

To get the passkey, connect a USB-Serial cable (the same cable that's used with all Eggtimer Rocketry products) to the 3-pin header as follows:

BLACK wire (GND) – GND Pin  
WHITE wire (RXD) – TX Pin  
GREEN wire (TXD) – not used

Using an ASCII terminal program such as TeraTerm or HyperTerminal, connect to the serial port at 115,200 baud, 8 bits, no parity, 1 stop bit. Now connect the battery to your Proton. You should see the following information:

**(a few lines of garbage... part of the boot process)**

```
Proton v2.01C
SSID: Proton_2abcd
PASSKEY: 3718 6501
```

Note that there is a space between the first four digits of the passkey and the second four digits, that's just to make it easier to read; when you actually enter the passkey don't type the space.

Disconnect the battery, and remove the serial cable. You won't need the cable again unless you forget the passkey, or you need to flash the software.

Now, fire up your device's WiFi manager. Connect the battery to your Proton... you'll hear the buzzer beep 3 times then stay on for a second, and in about 10-15 seconds you should see your

Proton's SSID on your WiFi manager. Connect to the SSID using the passkey that you obtained earlier (but don't put the space between the digits!), and you should see the Proton's status page. You're now connected to your Proton, and ready to start using it.

## Appendix F - Updating the Eggtimer Proton Software

From time to time we may make updates to the Eggtimer Proton software, to fix bugs and/or to add new features. The Proton is designed so that you can update the software easily from any Windows computer, using only the standard Eggtimer USB-Serial cable and a simple tool... a small paperclip bent into a “U”. Note that these instructions are for a Windows computer... we’re not Mac people, so we can’t help you much with that, although it should be possible. Sorry...

Here’s how to do it. We recommend that you read ALL of the steps before you start.

**IMPORTANT NOTE: DO NOT try to perform a firmware update with any loads attached to the deployment outputs! Although the chance of them firing during an update is virtually zero, it’s very bad safety practice to have any pyrotechnic loads connected to an altimeter when the rocket is not being prepped for flight.**

- 1) Download the latest software update from [eggtimerrocketry.com](http://eggtimerrocketry.com), you can find it at the Support / Eggtimer Proton page.
- 2) Unzip the download files to c:\eggtimer (create the directory first if it doesn’t exist).
- 3) Open up a Command Prompt, and type cd c:\eggtimer
- 4) Plug the USB-Serial cable into your computer.
- 5) If your COM port is NOT COM2, edit the “Proton\_<version>.bat” file, where <version> will be the latest version (i.e. 2\_01C) and change COM2 to COM3 or whatever port you’re using. Save the file.
- 6) Get a small paperclip and bend it into a “U” shape, with the prongs about 1/8” apart.
- 7) Disconnect the battery and any deployment wires from your Proton. If they’re soldered in, just make sure that there’s no igniter or other loads on the deployment channels.
- 8) Connect the serial cable to the 3-pin header on the Proton as follows:  
BLACK – GND  
GREEN – RX  
WHITE – TX
- 9) Now here’s the tricky part...
- 10) Insert the bent paperclip into the pads on the board marked PGM, next to the serial header. It should be firmly in place with no wiggle... it needs to short those pads.
- 11) Connect your battery to the Proton.
- 12) Now, from the Command Line (which should be at “c:/eggtimer”) type “Proton\_<version>.bat”, where <version> is the current version of the software (i.e. 2\_01C). For this example, you’d type C:/eggtimer: **Proton\_2\_01C.bat**
- 13) You should immediately see some text scrolling across the screen, and in about 3-5 seconds you should see a bunch of dots going across your screen (.....). This should go on for about a minute, then everything should stop.
- 14) Unplug your battery, remove the paperclip, then reconnect the Proton’s battery.
- 15) Your Proton should give you the normal power-up beeping. If it does not, unplug the battery, take a look at your files, your COM port, etc., then repeat steps 10-14.

You can confirm that you've uploaded the right version by simply connecting to your Proton with your WiFi device, the software version will be in the upper-right corner of every page. As usual, if you have any questions, feel free to drop us a line at [support@eggtimerrocketry.com](mailto:support@eggtimerrocketry.com).

## Appendix G – The Hardware Setup Menu

There is a special menu for setting parameters that typically do not change from flight to flight, and are hardware dependent. Currently, this menu has two parameters in it... the Voltage Offset and the SSID. Note that unlike the other menus, when you click on Submit it does not go to the Status Page; you have to close it manually. We recommend that you power-cycle your Proton if you change anything in this menu.

To access this menu, go to **192.168.4.1/hsetup**

<b>Proton_2abcd</b>	<b>2.01C</b>
<b>Hardware Setup</b>	
<b>Voltage Offset: 0.2V</b>	
<b>SSID:</b>	
<b>Submit</b>	

### Voltage Offset

This is the difference between the actual battery voltage and the value that is computed from the analog-to-digital converter on the processor. Typically, it's about 0.2V. If you find that your displayed battery voltage is significantly higher or lower than your actual voltage, you can change this to get a more accurate display value. Measure your battery voltage with a DVM while it's connected to the Proton. Assuming you're using a 2S Lipo battery, it's best if the battery has been slightly discharged to around 7.9V rather than freshly charged when you determine the offset you're going to use.

### SSID

This is a space to enter a custom WiFi SSID. If this field is blank, your Proton will use the default SSID, Proton\_nnnnn where nnnn is derived from the MAC address of your Proton. You may find that it is useful to change it to be your rocket's name, or something else that helps you identify that it's "your" Proton and not somebody else's. Allowable values are 8-14 characters, with the characters A-Z, a-z, 0-9, and the underscore ("\_"). Once you click Submit, this value is entered into memory, but it does not take effect until you power-cycle your Proton.

Note that only the SSID is changed; the passkey remains the same. You will have to re-pair your phone's WiFi with your Proton after you change the SSID; if you forgot the passkey, please see the section on recovering the passkey with the data cable.

# Eggtimer Proton Quick Start Guide

## **IMPORTANT:**

**NEVER “SWIPE” YOUR PROTON PAGES TO “CLOSE” THEM... YOUR DEVICE LEAVES THEM OPEN. GO TO THE “x” AND ACTUALLY CLOSE THE PAGE. SIMILARLY, DO NOT REFRESH A PAGE USING THE BROWSER’S REFRESH BUTTON, IT WILL RESUBMIT THE PAGE AND IT IS POSSIBLE FOR UNINTENDED CONSEQUENCES TO OCCUR.**

## **Power:**

7.4v/2S LiPo, 300 mAH or higher recommended. Larger capacity is Better...

Note: The Proton WILL NOT work properly with any battery under 6V!

Connect to the two BATT terminals, RED generally goes to "+" and BLACK to "-"

## **Deployment Power :**

Voltage: 6V-28V (2S/7.4V LiPo recommended for most purposes)

For SINGLE battery, simply jumper B+ and DP+ (or connect with a switch)

For DUAL batteries, connect: “+” of deployment battery to DP+

“-“ of deployment battery to DP-

Do NOT use the B+ pad

## **Output Modes:**

OFF: Turns the channel off

Drogue: Fires the channel at some time past nose-over on the way down.

Main: Fires the channel at some AGL altitude on the way down

Airstart: Fires the channel at some time on the way up after the trigger event

Clustered: Fires the channel when the Clustered-To Airstart channel fires.

See Appendix C for use with servos in Drogue & Main modes

## **WiFi Connection**

Use ONLY your browser’s “private” or “incognito” mode.

DO NOT use the Back button on your browser.

CLOSE all other browsers windows first.

DISABLE your VPN app if you’re using one.

NEVER “swipe” your pages to “close” them... hit the “X” close button instead

Select the “Proton\_XXXXX” SSID, and use the passkey that was on the WiFi module’s envelope (you did save it, right?), or recover the passkey using the data cable (see Appendix E for instructions)

Open up a new browser page and set the address to **192.168.4.1** to open the Status Page...bookmark it for later use!



If your phone complains about not being able to get to the Internet, tell it to “keep using WiFi”... DO NOT choose “Use Cellular Data”.

### **Status Page**

Displays:

SSID

Status (Disarmed, normally)

Validation Code (for arming)

Deployment Power Status (C-Series Protons only)

Channel Summary/Status

Battery Voltage

ASL altitude

Accelerometer reading in G's (with link to Calibration page)

Temperature in F

### **Drogue Settings**

Click on Change link next to Drogue settings to change

0.1-9.0 secs by 0.1 secs, 3.0 – 30 secs by 1.0 secs

Drogue mode (igniter/servo)

Drogue on-time or servo direction/skew

### **Main Settings**

Click on Change link next to Main settings to change

OFF, Nose-Over, 100’-500’ by 50’, 500’-2,000’ by 100’

Main Mode (igniter/servo)

Main on-time or servo direction/skew

FailSafe:

Velocity: OFF, 50-200 ft/sec by 25 ft/sec

Time: 50-3000 ms by 25 ms

### **Global Settings**

Click on the Settings link on the Status Page to change:

LDA – Launch Detect Altitude

Launch samples/sec

Descent Samples/sec

### **Arming (with the WiFi interface)**

Power on the Proton

Select the proper flight settings

Check it in with the RSO/LCO and rack your rocket

Raise your rocket on the rail and check channel status for all **AQUA** or **GRAY**

Enter the 4-digit validation code, then click ARM

(You may need to wait if the 3-minute timer has not expired)

When the “Armed” page displays, CLOSE YOUR BROWSER

You’re ready for flight when you hear the buzzer “chirping” rapidly

### **Auto-Arming**

Power on the Proton, then connect to WiFi  
Select the proper flight settings, enable Auto-Arm on the Settings page  
Power off your Proton  
Check in with the RSO/LCO and rack your rocket  
Raise your rocket on the rail and power on your Proton  
After the 3-minute warm-up period, it should go into the flight sequence  
(you'll hear the buzzer start "chirping" rapidly)  
If you hear a long beep repeated every few seconds instead of the chirp,  
it failed the pre-flight check... turn off the Proton, take it off the rack, and figure out  
why.

### **Disarming (for aborted flight)**

Connect to the Status page (192.168.4.1)  
Enter the 4-digit validation code, then click DISARM  
Wait for the normal Status Page... if it takes more than 10 seconds, refresh your browser

### **Downloading Flight Status Data**

Click on the Flights link on the Status Page  
Click on the 'More' link next to the flight  
View the Flight Summary data...  
For detail .csv download, click on the 'Detail' link at the bottom of the Flight Summary  
page

### **Deployment Channel Testing**

Check your Settings first, set appropriately (you cannot test a channel set to OFF)  
CLOSE the Status Page if you have it open (and any other open pages)  
Open a new browser to the test page... **192.168.4.1/test**  
Select the channel to fire... it uses the settings from the Global Settings page  
Enter the 4-digit validation code then click TEST  
To abort a test, close the page before it counts down to zero  
Note: Selecting the Airstart channel of a clustered set will fire ALL clustered channels.