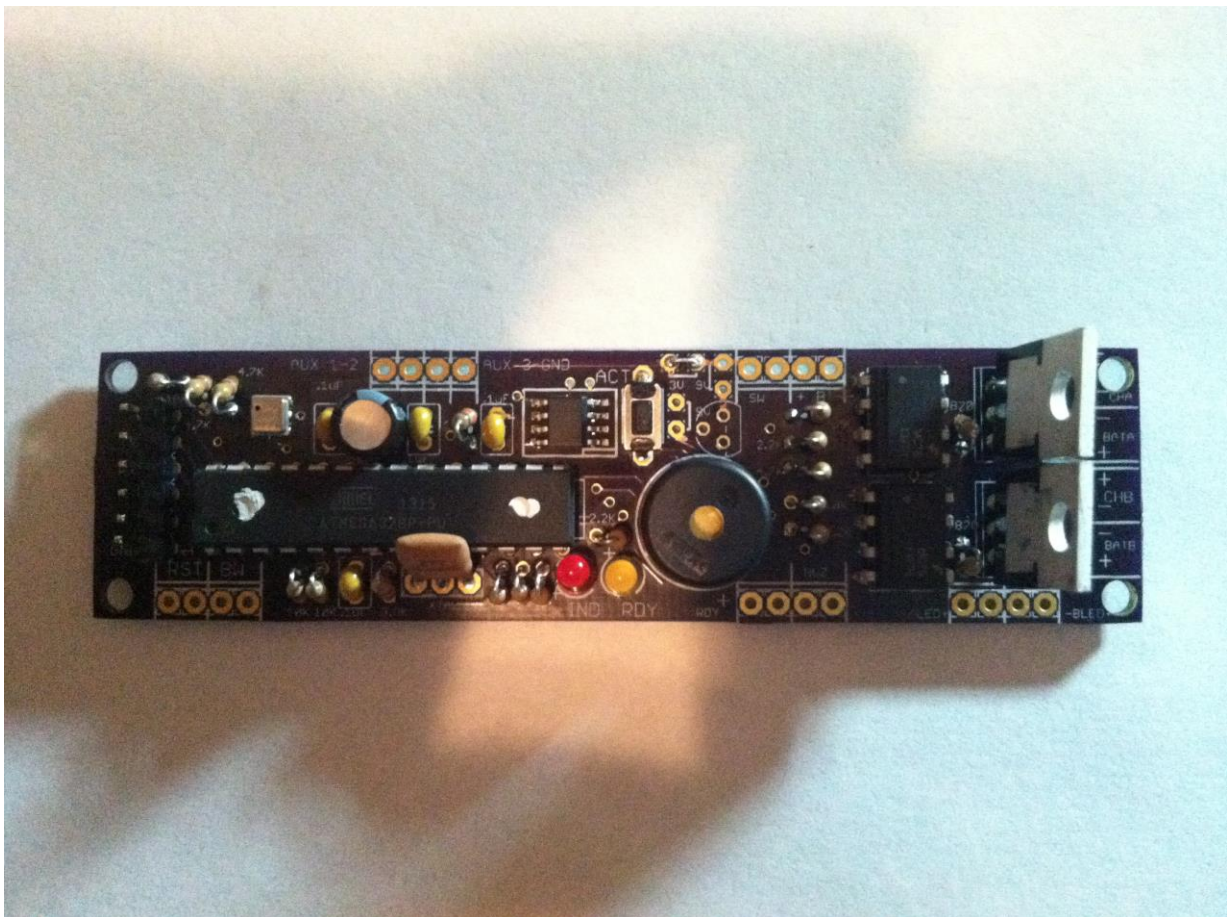


Eggtimer Flight Computer Assembly Manual

Board Rev D





Before You Start...

- Go to our web site at www.eggtimerrocketry.com and download the latest Release Notes.
- Go to our web site at www.eggtimerrocketry.com and download the latest Assembly Instructions.
- Read them thoroughly before starting... it will save you some grief later, we promise!
- We recommend that you apply the latest Flash Updates after validating your Eggtimer's operation; you should do this BEFORE you perform a Master Reset (since it may affect how memory is used)
- **Before you can program or fly your Eggtimer, you need to perform a Master Reset. See Appendix A in the Eggtimer Users Guide for details.**

~~~~~

Thanks for buying an Eggtimer flight computer! We're sure that you are ready to get started, but before you do you will need to get some tools together. The tools that you will need are:

- \_\_\_ Low-wattage soldering iron, 15W or less, with a fine tip
- \_\_\_ Fine rosin-core solder, .022"-.032", 60/40 tin-lead or similar lead-free solder
- \_\_\_ Small needle-nose pliers
- \_\_\_ Small diagonal cutters
- \_\_\_ A small damp sponge for cleaning the tip of your soldering iron
- \_\_\_ A lighted magnifier, for inspecting solder joints (not essential, but very helpful)
- \_\_\_ A well-lighted place to work, preferably with a wood or metal surface, also preferably not carpeted

Each installation step has a check-off line, we strongly recommend that you check them off as you go, and that you perform the steps in sequence. We have listed the steps in order to make it easiest to assemble the Eggtimer, deviating from them isn't going to make your life any easier.

## **About Soldering Your Eggtimer...**

Assembling your Eggtimer isn't that hard, but we recommend that you don't choose it as your first kit project. You must be able to solder small components using fine solder and get nice shiny solder joints. If you have never soldered before, you need to learn anyway, because if you are going to do rocketry electronics you're going to be doing some soldering. If you want to get into advanced projects like telemetry, you're probably going to be doing a lot of soldering. We recommend that you get a few small kits from Ramsey or SparkFun, put them together, and hone your skills on them first. There's a lot of fun stuff out there, so go for it!

We recommend using the finest solder that you can find, either .025" or .032" rosin-core solder. We recommend Kester or Multicore brands, a good 60/40 solder (60% lead 40% tin) works great and those brands and alloys are readily available. If you do not wish to use leaded solder, or you can not due to environmental regulations, get the lowest melting non-leaded solder you can find; if you want to read all about lead-free solder, go to:

[http://www.pdma.com/ul\\_files/forums/leadfree/aim\\_lead\\_free\\_guide.pdf](http://www.pdma.com/ul_files/forums/leadfree/aim_lead_free_guide.pdf)

A low-temperature Sn/Ag/Cu alloy is best, look for one that melts at 217 °C or lower and is suitable for high-vibration applications.

European Union countries have a regulation known as RoHS, "Restriction on Hazardous Substances", that prohibits the use of leaded solder in consumer products. Kits such as the Eggtimer are exempt from this regulation, however we abide by the principle regardless, all components are certified by their vendors as being RoHS compliant. However, we do not certify the Eggtimer as RoHS-compliant because we have no control over what solder alloy is used to mount the components. This does not currently apply to the US or Canada, but who knows when it might be adopted here...

For soldering components on a board like the Eggtimer, we recommend a small pencil soldering iron, about 15W. If you are only going to use it occasionally, Weller makes a decent cheap 12W iron, it's about \$15. We like it, but the copper tips seem to oxidize and corrode rather quickly compared to some more expensive irons; fortunately, the tips are replaceable and cheap. Better would be a fancier soldering pencil with iron tips; those run about \$30, but they'll last forever. The best iron would be a temperature-controlled solder station, they typically start at about \$50 for a cheap one and can go to a few hundred dollars if you want to get really fancy. Weller makes a good one for about \$50, if you make the investment that will probably be the last soldering iron you will ever need to buy. These solder stations usually have a little well with a tip-cleaning sponge, so they end up taking less room on your workstation too.

You may also want to buy a portable battery-powered or butane soldering iron to have in the field, in case you need to tin a wire or repair a solder joint in the field. They work fine, but we recommend that you do not use them to assemble the Egg timer, they generally do not put out as much heat as the electric irons and you may not get really good solder joints, especially if you use non-leaded solder which has a higher melting point than leaded solder.

## **Step 1: Sort the Components**

Before you start soldering anything, you need to lay everything out and make sure that you are familiar with all of components, and that you have everything. (Yes, we ARE human and sometimes make mistakes... if you are missing something, let us know immediately so we can send you whatever you need). You should have the following parts, check them off as you sort them...

| <u>Qty</u> | <u>Description</u>                                                      |
|------------|-------------------------------------------------------------------------|
| ___ 1      | Circuit board pre-populated with surface mount sensor and memory        |
| ___ 1      | Atmel ATMEGA328P-PU processor chip (big 28-pin IC)                      |
| ___ 2      | MCT-6 Dual Optoisolators (8-pin chips)                                  |
| ___ 2      | TIP120 Transistors (3-pins)                                             |
| ___ 1      | LP2950-33 Voltage Regulator (small black plastic part with 3 leads)     |
| ___ 1      | 3mm Red LED                                                             |
| ___ 1      | 3mm Yellow LED                                                          |
| ___ 1      | Pizo buzzer element (round plastic component with two wires and a hole) |
| ___ 1      | 16.000 MHz ceramic resonator                                            |
| ___ 2      | 820 ohm 1/8 watt resistors (bands are grey-red-brown)                   |
| ___ 1      | 1K ohm 1/8 watt resistor (bands are brown-black-red)                    |
| ___ 4      | 2.2K ohm 1/8 watt resistors (bands are red-red-red)                     |
| ___ 1      | 3.9K ohm 1/8 watt resistor (bands are orange-white-red)                 |
| ___ 4      | 4.7K ohm 1/8 watt resistors (bands are yellow-purple-red)               |
| ___ 6      | 10K ohm 1/8 watt resistors (bands are brown-black-orange)               |
| ___ 4      | .1 uF multilayer ceramic capacitors (marked "104")                      |
| ___ 1      | 10 uF electrolytic capacitor (tubular component with two wires,         |





part onto the board incorrectly, it can be a minor pain to remove if it only has two pins, or it can be virtually impossible for something with a lot of pins like the processor. ***The Eggtimer Limited Warranty does not cover incorrect assembly***, so if you mess up badly enough you may end up having to get another kit and starting over; neither of us want that.

There are several different resistor values, so make sure you get the right ones in the right place. They are marked on the boards, but once again you need to make SURE that you have them in the right place before soldering. Unsoldering parts on a small circuit board like the Eggtimer isn't a lot of fun, even if you have a vacuum desoldering tool. Trust us, we've been there before...

In general, you are going to assemble the Eggtimer from the lowest-profile components first and work your way up to the taller components. This will make it easier to keep parts from falling off the board as you turn it over to solder them. To help keep parts from falling out, you can use a little paper masking tape to temporarily hold them in place until you solder them. DO NOT use "Scotch"® tape or electrical tape for this; plastic tapes can pick up static electricity, and electrical tape tends to leave a sticky residue.

If you have been doing this kind of thing for awhile, you have probably noticed by now that we do not include sockets for the processor or the optoisolators. There are a couple of good reasons for this. First, they add cost and weight, although not much. Secondly, they add about ¼" to the height of the board, which can make it a tight fit in 29mm motor or BT-55 body tubes. Finally, and most important, components CAN be dislodged from sockets during a flight due to acceleration and vibration. We have seen it happen, and the results are not pretty, particularly if you are doing electronic recovery system deployment. Soldering these components to the board completely eliminates this possibility. Neither the processor nor the optoisolators are going to be damaged by the low-heat soldering that you will use to mount them to the Eggtimer PC board, as long as you keep to our recommendations for the soldering iron and solder.

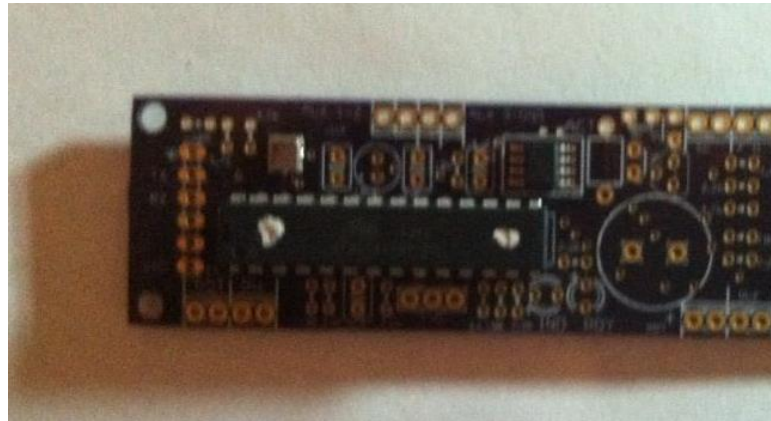
## **Eggtimer Assembly Checklist**

Before you solder anything, make ***absolutely*** sure that you have the correct part and that it is inserted in the board correctly. The board has all of the component values, outlines, and polarities silk-screened on the top, so there shouldn't be any doubt about what goes where and how. Nevertheless, if you have any questions about the assembly procedure, do not hesitate to drop us a line at [support@eggtimerrocketry.com](mailto:support@eggtimerrocketry.com) before you solder the parts to the board. You may have to wait a day for the answer, but it could save you a lot of grief later on!

***The Eggtimer Limited Warranty does not cover damage to parts while attempting to desolder them because you inserted something incorrectly.*** We spent a lot of time making sure that the assembly instructions were clear, but once again if you have any questions about the assembly procedures drop us a line at [support@eggtimerrocketry.com](mailto:support@eggtimerrocketry.com) ***before*** you solder.

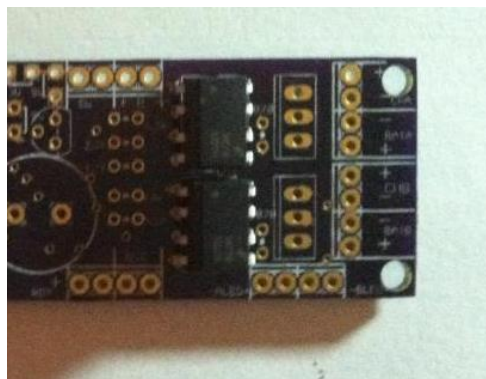
\_\_\_ Mount the Atmel ATmega328P-PU processor

Carefully remove the processor chip from the anti-static foam or tube in which it was shipped. Identify the notch at one end of the chip, this notch needs to line up with the notch that's silkscreened on the PC board. Gently insert the chip into the holes, and turn the board over. The holes are small, so you may have to wiggle it around a bit to get all 28 pins into them. Solder ONLY two opposite corner pins, then turn the board upright again, and make sure that 1) you have the chip pointed in the right direction, and 2) the chip is seated completely against the circuit board. If you made a mistake, you will have to carefully unsolder the chip and fix the problem; two solder joints are a lot easier to fix than 28. If it looks good, turn it back over and finish soldering the rest of the pins.



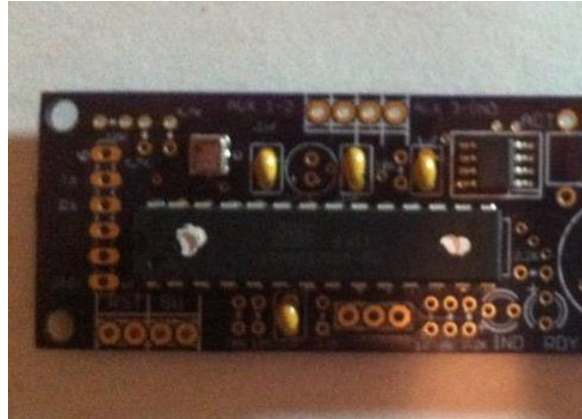
\_\_\_ Mount the Optoisolators

Carefully remove the two MCT-6 optoisolator chips from the anti-static foam or tube in which they were shipped. Identify the notch at one end of the chip, this notch needs to line up with the notch that's marked on the PC board. Some chips don't have a notch, they have a dot instead; the dot should line up with the notch marked on the board. Gently insert the chips into the holes, and turn the board over. Solder ONLY two opposite corner pins of each chip, then turn the board upright again, and make sure that 1) you have the chip pointed in the right direction, and 2) the chips are seated completely against the circuit board. If you made a mistake, you will have to carefully unsolder the chip(s) and fix the problem. If it looks good, turn it back over and finish soldering the rest of the pins.



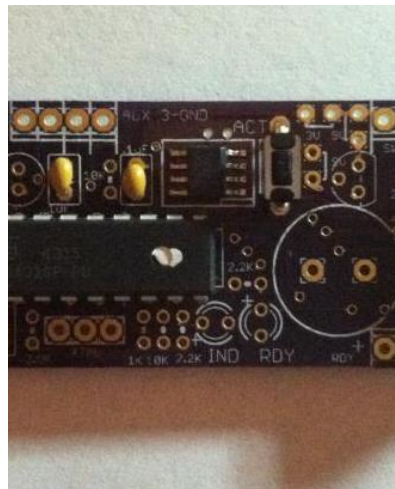
\_\_\_ Mount the .1uF ceramic capacitors

Insert the four .1 uF ceramic capacitors (marked “104”) into the appropriate holes. These are not polarized, so it doesn’t matter which way you mount them. Turn the board over and solder them to the board. Trim the excess leads.



\_\_\_ Mount the push button switch

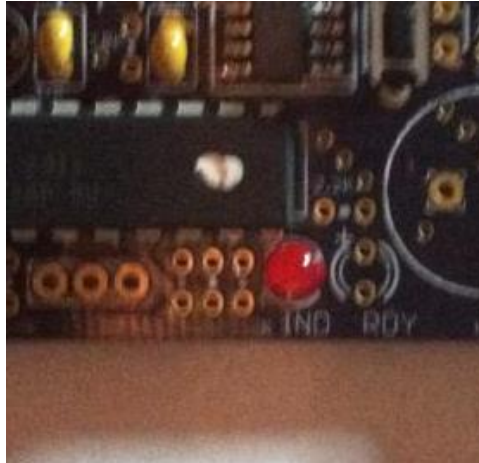
Insert the push button switch into the holes on the board. It has a little kink in the leads, so it will stand off about 1/16” if you have the kink centered in the middle of the hole. It’s not polarized, so you can’t mount it incorrectly. Turn over the board and solder the leads to the board.



\_\_\_ Mount the RED (IND) LED

Insert the RED LED into the holes for the IND LED, make sure that the LONG lead is in the hole marked “+”. LEDs are polarized, if you put it in backwards it will not work, so double-check! Turn the board over and solder the leads to the board. Trim the leads flush.





### — Mount the YELLOW (RDY) LED

Insert the YELLOW LED into the holes for the RDY LED (it may be clear, rather than yellow or orange). Note that the LED may be clear rather than yellow. Make sure that the LONG lead is in the hole marked “+”. Double-check to make sure! Turn the board over and solder the leads to the board. Trim the leads flush.



### Mounting the Resistors

The resistors are going to be mounted vertically, so you will need to bend one lead back against the body of the resistor in order to do this. They aren't polarized, but we like to have all of the color bands facing up to make it easier to identify them (the fourth band is a “tolerance” band and will probably be the same color on all of the resistors).

\_\_\_ Mount the 1K Resistor (brown-black-red bands)

Bend one lead back on the 1K resistor. Locate its position on the board, to the left of the yellow LED, and insert the resistor in the board. Turn over the board and solder the resistor in place, trimming the leads flush afterwards.



\_\_\_ Mount the 2.2K Resistors (red-red-red bands)

Bend one lead back on each of the four 2.2K resistors. Locate their positions on the board, and insert the resistors in the board. One is just to the left of the red LED, one is just above the yellow LED, and two are just to the left of the optoisolators. Turn over the board and solder the resistors in place, trimming the leads flush afterwards.



\_\_\_ Mount the 3.9K Resistor (orange-white-red bands)

Bend one lead back on the 3.9K resistor. Locate its position on the board, and insert the resistor in the board. Turn over the board and solder the resistor in place, trimming the leads flush afterwards.



\_\_\_ Mount the 4.7K resistors (yellow-violet-red bands)

Bend one lead back on each of the four 4.7K resistors. Locate their positions on the board, just to the left of the silver pressure sensor near the top-left side of the board, and insert the resistors in the board. Turn over the board and solder the resistors in place, trimming the leads flush afterwards.



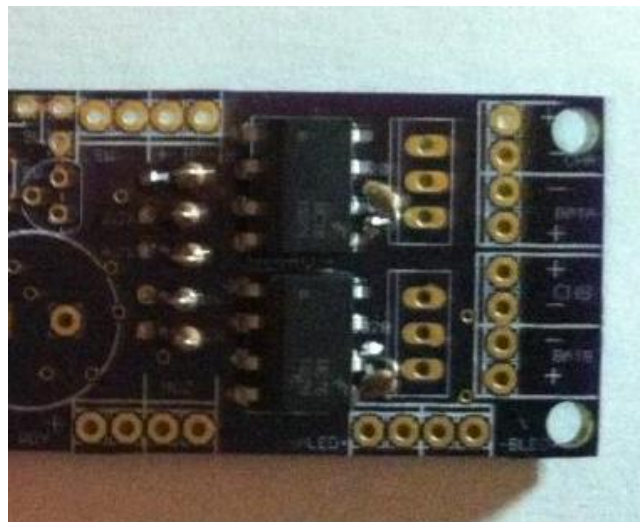
\_\_\_ Mount the 10K resistors (brown-black-orange bands)

Bend one lead back on each of the six 10K resistors. Locate their positions on the board: two near the bottom left of the board, one at the upper left corner of the board, one in the upper side of the board between the two .1 uF capacitors, and two just to the left of the optoisolators. Insert the resistors in the board. Turn over the board and solder the resistors in place, trimming the leads flush afterwards.



\_\_\_ Mount the 820 ohm resistors (grey-red-brown bands)

Bend one lead back on each of the two 820 ohm resistors. Locate their positions on the board, just to the right of the optoisolators, and insert the resistors in the board. Turn over the board and solder the resistors in place, trimming the leads flush afterwards.





\_\_\_ Mount the 10 uF electrolytic capacitor

Insert the 10 uF electrolytic capacitor into the holes on the board, making sure that the lead with the “- - - -” markings next to it is inserted **OPPOSITE** the hole marked “+”. The “- - - -” band should be facing **away** from the processor chip. Double-check to make sure that you have this inserted correctly! Turn over the board and solder the leads to the board. Trim the leads flush.



\_\_\_ Mount the 6-pin header

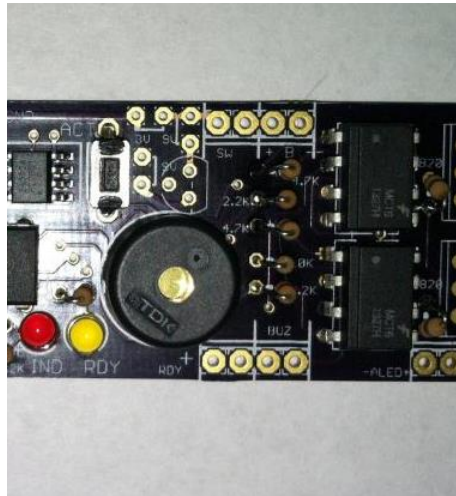
Note that the header is not symmetrical, one side of the pins is a little longer than the other side. Insert the header into the holes at the front of the board, using the **SHORT** side. The **LONG** side should be on the **TOP** side of the board. You will probably need to use masking tape to hold it in place, you want to make sure that it's absolutely vertical and that it's seated completely against the board. Turn over the board and solder the pins to the pads.





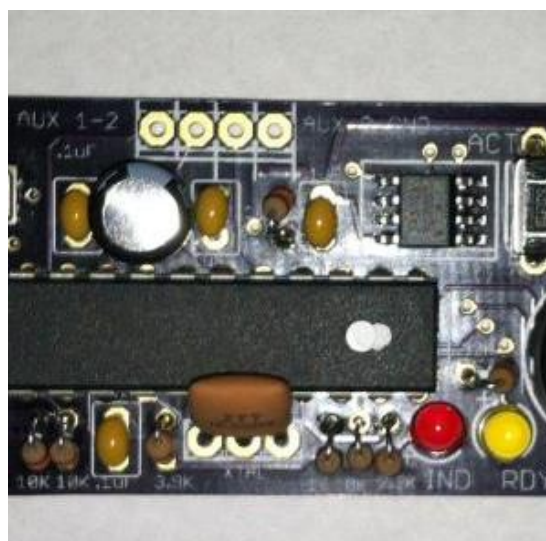
\_\_\_ Mount the pizo buzzer

Insert the pizo buzzer into the holes on the board. It is not polarized, so it doesn't matter which way you mount it. Turn over the board, and solder the leads to the pads. Trim the leads flush.



\_\_\_ Mount the resonator

Insert the 16.000 MHz resonator into the holes on the board (marked "XTAL"), making sure that it seats completely. You may need to use some masking tape to hold it in place. It is not polarized, so it doesn't matter which way you mount it. Turn over the board and solder the leads, and trim if necessary.



## \_\_\_ Mount the Power Jumpers and/or Voltage Regulator

The RevD Eggtimer board has two power options: You can use a 3V-4V battery without the voltage regulator (like the “classic” Eggtimer) or you can install the voltage regulator and use any battery from 4.5V-30V. Either way, you will have to install one or two jumpers to select your power option. Do NOT solder both sets of jumpers, or you will damage the Eggtimer board!

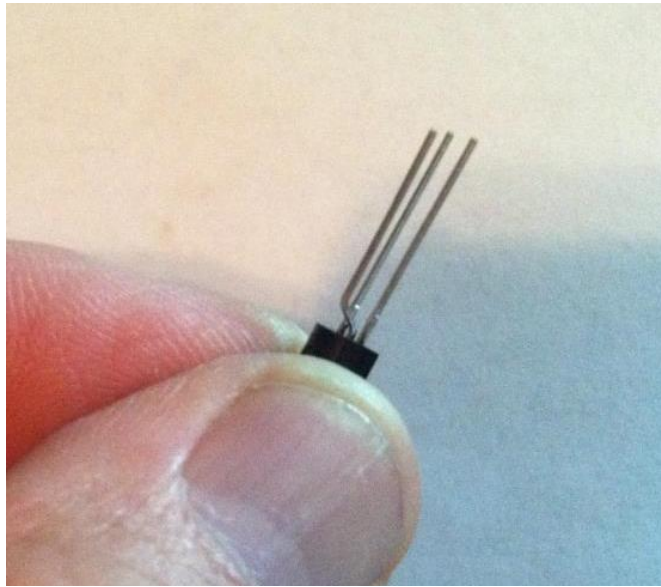
### 3V-4V Option (No Regulator)

Locate the ONE set of pads marked “3V”, and with a spare piece of resistor lead install a jumper across those pads. You will probably need to hold it in place with some paper masking tape before you solder. Turn the board over, solder the jumper in place, and trim the excess leads.



### 4.5V-30V Option (With Regulator)

Hold the regulator so that the leads face upwards. GENTLY bend the center lead out 90° towards the round side of the case, about 1/16” from the bottom of the case. Try not to bend the leads too sharply, or you may break them. Then, bend the center lead UP about 1/16” from the bend, so that it makes a “Z”. See the picture below.



With a spare piece of resistor leads, install a jumper across each of the TWO sets of jumpers marked “9V”. You will probably need to hold them in place with some paper masking tape before you solder. Turn the board over, solder the jumpers in place, and trim the excess leads.

Now, install the regulator in its spot on the board next to the two jumpers, making sure that it lines up with the outline silk-screened on the board. Hold it in place with some tape, turn the board over, and solder the regulator to the pads. Trim the excess leads.

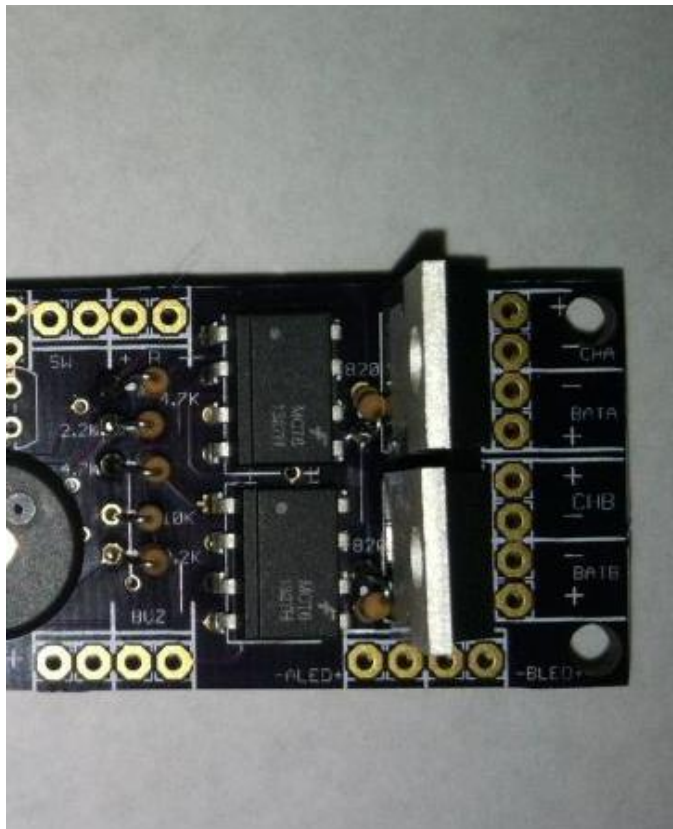


## \_\_\_ Mount the transistors

The deployment transistors can either be mounted on the top of the board or the bottom. If you mount them on the top of the board, the board will lay flatter on your sled, but the overall height will be taller than if you mount them on the bottom. In general, we like top-mounting for AV bays 3" or larger, and bottom-mounting for AV bays under 3". If you are building a minimum-diameter rocket (the Eggtimer will fit into a BT-55 body tube), then bottom-mounting is a must.

### Top Mounting:

Insert the transistors into the board, so that the metal tab is facing the front of the board (the side with the header). There is an outline of the transistors silk-screened onto the top of the board, the close parallel lines should line up with the tab. Hold them in place with some paper masking tape, turn the board over and solder them to the pads. Trim the excess leads flush.

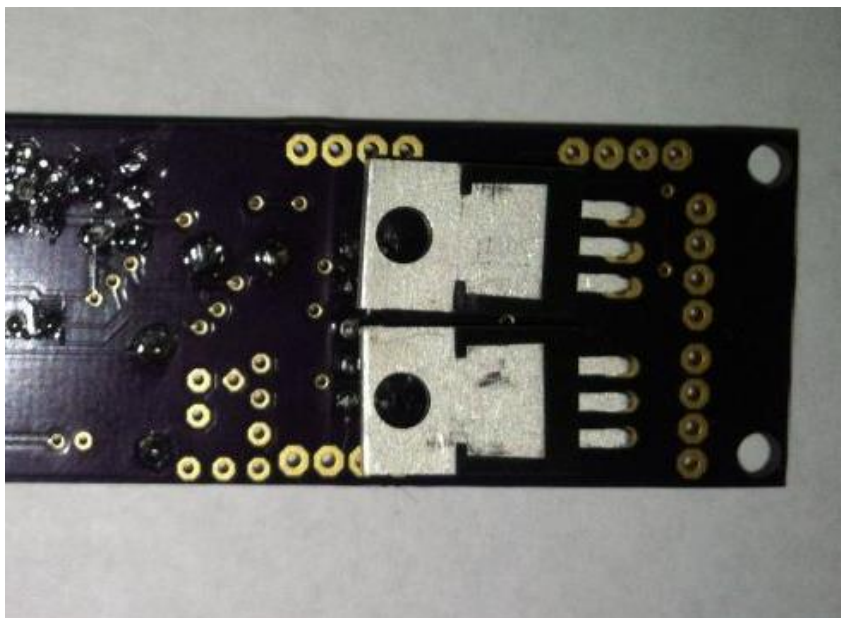


### Bottom Mounting:

Hold one of the TIP120 transistors horizontally with the metal tab facing down. The plastic side of the transistor with the writing should be facing up. With a pair of needle nose pliers, bend the leads upwards 90°, at the point where the leads get skinnier. See the picture below. Repeat for the other transistor.



Turn over the PC board and insert them into the board **FROM THE BOTTOM SIDE**, they should be facing the front of the board (the side with the header). If you bent the transistor leads correctly, the plastic side of the transistors will be laying against the bottom of the PC board. Turn over the board and solder the leads to the pads **ON THE TOP SIDE OF THE BOARD**. This is the only component that is soldered on the top of the board. Trim the leads flush.





## — Locking Headers (Optional)

The RevD Eggtimer has the wiring pads spaced to accept 4-pin locking headers. Using matching locking plugs, this allows you to easily remove the Eggtimer from the rocket by unplugging the locking headers. Note that the locking header kit includes 7 headers/sockets and the pins; however we recommend that you DO NOT install the header on the Battery/Switch pads if you plan on using your Eggtimer for triggering parachute deployments or airstarts. This is for the same reason that we don't have screw terminals... they CAN go intermittent under some conditions, and losing power during flight is a bad thing. If you are going to be doing multiple deployments/airstarts, you should SOLDER the battery clip/holder to the board, and SOLDER the switch leads to the board.

If you purchased the locking header kit, install a 4-position header into each of the sets of 4 pads (except perhaps the battery/switch pads). Note that the headers stick out from the edge of the board about 1/16", this is normal since the pads are spaced so that the board size is minimized if you do not use the headers. The locking tab should face the INSIDE of the board, so that the open side of the headers face OUTSIDE the board. Hold them down flush with the board using some masking tape, turn the board over, and solder the header pins.



~~~~~

Assembly of your Eggtimer is now complete. Inspect the solder side of the board carefully, looking for “cold” solder incomplete solder joints. Cold solder joints appear dull instead of shiny, and may appear as blobs of solder and not have the nice “wetting” of the pad that you will see with good joints. A magnifying light is good for checking the board. If you want, you can also use some spray flux remover on the component side of the board, a small brush like an old toothbrush will help remove any flux residue. This will make it a little easier to spot for incomplete solder joints. Warning: DO NOT spray flux remover directly on the top side of the board, it may damage the pressure sensor!

Note: When you first get your Eggtimer, the flight memory is NOT initialized, and it is NOT ready for flight! Please see Appendix A in the Eggtimer Users Guide for instructions on how to clear the flight memory by performing a Master Reset. You will need to do this before you can program or fly the Eggtimer, or unpredictable results may follow!

About Wiring Your Eggtimer

The Eggtimer does not use screw terminal blocks to mount the wires, instead there are solder pads to which you can solder #24 stranded wires. The wires in terminal blocks CAN work loose with the forces of flight, so it's better to solder the wires on the board and to whatever switches or battery clips you are using. If you are going to use removable connectors such as for batteries, the connectors used for RC model servos (Deans, Futaba, Airtronics, etc.) work very well; just buy a "servo extension" and you will get a 12" or longer pigtail with both a male and female connector. We recommend against using slide switches for power, reset, etc., they have a tendency to "bounce" under high G forces, which is going to cause your Eggtimer to lose power or reset and will ruin your whole day at the field. See the Eggtimer User's Manual for some suggestions on switches, shunts, and jumpers.

Note that if you have installed the locking header kit, you will have to crimp the wires to the pins. You need to use a "D-Sub" crimp tool, do NOT try to do it with pliers; you will not get a good crimp and you will be frustrated because they'll just flatten out so they won't fit in the socket. To terminate a wire in the pins, strip the wire clean, trim it down to about 1/16", insert the wire into the pin so that the crimp on the back will crimp over the end of the insulation, and crimp using the tool.

You will need to solder some wires to the Eggtimer board in order to test it, we like using the 4 stranded twisted-pair wiring that's used with Ethernet network cables. Get the cheapest ones you can find (we've even seen them in dollar stores!), cut off the ends, and carefully strip about 1' of the jacket off at a time until you get the length you want. The nice thing about these cables are that the wires are color-coded so it's going to make it easier to trace your wiring, and the wires are twisted together so it's easier to route them. They are also in solid-striped pairs, so it's easy to make sure that anything that's polarized (such as the battery connections) is hooked up properly... by convention, solid goes to the "+" side, striped goes to the "-" side. If you can find it, the "plenum rated" cable is the best... the jackets are heat-resistant Teflon® instead of the more common PVC. Note: we **strongly** recommend that you tin the wires before soldering them to the Eggtimer board. This prevents loose strands of wires from bridging the pads, or coming loose and lodging somewhere on the board (like underneath the processor chip!). Trim the wires after soldering.

Testing your Eggtimer

You can test your Eggtimer very easily on your workbench, you do not need to install it into a rocket first with a full-blown electronic deployment setup. All you need to do is to solder some "pigtail" wires to the board, 12" is a good length. At a minimum, you will need to connect the battery and short the switch wires together, but you can also test the deployment

circuit easily as well. You will need a suitable battery to power the Eggtimer (two AAA batteries work well if you chose the “3V” option, and a 9V battery works fine if you are using the regulator) and optionally a separate battery for deployment testing (a 9v battery works fine).

IMPORTANT: You MUST match your choice of battery to the voltage option that you chose when you assembled your kit. If you chose the “3V” option WITHOUT the regulator, the Eggtimer is designed to be connected directly to a 3V-4V battery, such as two “AAA” batteries, a 3.7V 1C LiPo battery, a 3V lithium battery such as a CR123 or CR5, or a 3.6v NiMH battery pack. It will NOT work with a 9V battery. **If you configured your Eggtimer's power jumpers for 3V and connect the Eggtimer to a 9V battery, you WILL damage it irreparably.** If you are using a variable-voltage power supply for testing, make SURE that you are using a suitable voltage. Damage due to high voltage is not covered by the Eggtimer's Limited Warranty. If you chose the “9V” option using the regulator, you can use any power supply from 4.5V all the way up to 30V. A 9V battery or a 2S LiPo battery is ideal.

You will need to use an USB-TTL interface cable, conveniently the Eggtimer comes with one. The header is pinned for a standard FTDI-type 6-pin connector, but you can also use a cable with individual pins (TX, RX, GND) by simply plugging those pins into the corresponding pin on the connector. You will need to install the driver software for the USB-TTL interface that you are using on your computer before you can use it. The one that comes with the Eggtimer uses a Prolific PL2303TA USB-serial chip, your operating system may already have the drivers installed for it but if it does not you can get it at

<http://www.prolific.com.tw/US/ShowProduct.aspx?pcid=41&showlevel=0041-0041>

They have drivers for Windows (x86 and x64 versions), MacOS, and Linux. Since the Eggtimer uses a serial terminal interface, this means that you can use just about any computer you want with it. See the Eggtimer Users Manual for suggestions on suitable terminal software, many of them are freeware.

The USB-Serial cable that comes with the Eggtimer has three separate wires rather than a 6-pin FTDI-standard header. You need to connect it to the Eggtimer as follows, depending on the colors of your cable's pins (we have several suppliers and the colors are unfortunately not standardized).

Black – Green – White Cable:

BLACK - Eggtimer “GND” pin

GREEN – Eggtimer “RX” pin

White – Eggtimer “TX” pin

Plug the serial interface into a USB port, and confirm that your OS assigns a serial port to it. Set the serial port to 19,200 baud, 8 bits, 1 stop bit, no parity, and no handshaking. Open up your terminal program, select the serial port that your OS assigned to the USB interface, and connect. Connect power to the Eggtimer, after a few seconds the IND light should come on, it should start beeping, and you should see the programming screen:

Eggtimer Build_1.53

Flight Settings

A	100	LDA <50-500 by 50>	T:23.50
B	10	Burn/Coast Samp/sec: <4,5,8,10,15,20,25,33>	P:97804.00
	100	Interval (ms)	A:975.39
C	2	Descent Samples/sec <1,2,4,5,10>	Main:0
	500	Interval (ms)	CHB:0
D	0	Main Mode <0-Off, 1-IGN, 2-Servo CCW, 3-Servo CW>	Batt:3.12
E	400	Main Altitude <100-2000 by 50, 0 @ Apogee>	
F	1	Main ON-Time <1-9,0-Cont.>	
G	0	CHB Mode <0-Off,1-Ignitor,2-Servo CCW, 3-Servo CW, 4-Airstart, 5-Airstart w/o Breakwire,6-Delay>	
H	1	CHB ON-Time <1-9,0-Cont.>	
I	1	Burn Timer <1-20>	
J	0	Airstart/Delay <0-9>	
K	0	Telemetry	
O		Comments:	

Options: Esc, A-0, ?

Hit the Enter key a few times, you should see the P: and A: values change slightly. If it looks pretty much like this, then Congratulations! Your Eggtimer is now working.

To test the deployment channels, you will need to connect a battery to the BCHA/BCHB terminals, and add some kind of load to the output channels. A common 9v battery makes a good test battery, you can get a battery clip from Radio Shack and simply tack-solder it to your tinned pigtails. Make sure that you match the polarity, red goes to “+” and black goes to “-“. For a test load, we recommend using the bulbs from a strand of miniature Christmas tree lights (the little ones, not the big ones!), simply unravel a few from the strand, cut them off from the strand leaving about 1” of wire on them, and strip and tin about 1/8” from the wire. Tack-solder them to the pigtails of the Main and CHB channels. Note: NEVER test with a live deployment charge! If you need to test your battery/igniter combination, use ONLY an igniter, preferably at least 5 feet from you and the Eggtimer.

IMPORTANT: You must connect some kind of resistive load across the deployment terminals, such as a Christmas tree light bulb or #32 nichrome wire. **DO NOT SIMPLY SHORT THE TERMINALS TOGETHER WITH A PIECE OF WIRE TO TEST THE CONTINUITY!** If the deployment channel fires, it WILL damage the output transistors if you are using a battery such as a LiPo that is capable of sourcing more than 8A of current.

When you bring up the Eggtimer programming screen, hit Enter, and both the CHB and Main statuses should change from 0 to 1, indicating that there is continuity on those channels. If you remove one of the bulbs, the status for that channel should go from 1 to 0.

To perform a deployment test, hold the button down while powering on the Eggtimer. You will see the MON> prompt, which means that it’s in the utility monitor mode. To test the deployment channels, hit the “M” key to select the Main channel, and you will hear a continuous tone to let you know it’s in test mode. Press the button down, and the Christmas

tree bulb on the Main channel should come on for two seconds then turn off. To test the CHB channel, repeat the procedure, but hit “B” key to trigger the CHB channel. The CHB light should come on for two seconds, then shut off. If both of these work, then your Eggtimer is 100% operational.

Troubleshooting

If your Eggtimer doesn't work after assembly and testing, take a deep breath, get out a beverage to clear you mind, and start troubleshooting...

Check Your Solder Joints

The very first thing you should do is to check out all of the solder joints under a lighted magnifier. The most common reason for things not working are solder bridges, i.e. putting too much solder on the pads and shorting two adjacent pads together. You can also get into problems by bridging pads with “vias” on the board, the smaller holes that don't have any components soldered to them. Most of the holes and the pads are very small, so it doesn't take much solder to get a nice “tented” solder joint. If you get a solder bridge, heat it up and use a solder wick or a vacuum bulb to remove the excess; afterwards, we recommend resoldering the joints.

Another thing to look out for is “cold” solder joints, they look dull and blobby compared to a nice shiny “tented” solder joint. If you have a cold solder joint, it won't conduct well; at the low power that the Eggtimer uses this could easily keep things from working. If you have a cold solder joint, heat it up and put just a little bit of solder on it, the main idea is to get a little more flux on the joint. If you have separate flux, you can use that in place of the solder. If there's too much solder, use a solder wick or (preferably) a vacuum bulb to remove the excess, then heat it up and resolder the joint.

Check Your Component Polarity

Most of the components aren't polarized, with some notable exceptions. The outline of the parts is silk-screened on the board, so you should be able to see readily if you have a component soldered in backwards. Components that are polarized are:

- The 28-pin processor chip; the notch needs to face to front of the board (towards the header)
- The opto-isolators; the notches need to face up
- The transistors, the plastic side should be laying against the bottom of the PC board with the tabs facing forwards (towards the header)
- The 10uF electrolytic capacitor, the side marked “-----“ should be OPPOSITE the side marked “+” on the board (**away** from the processor chip).
- The LEDs, the long leads should have been inserted in the pad marked “+”. Unfortunately, once you clip the leads it may be difficult to tell if you have inserted it correctly.

If you inserted a component incorrectly, you will have to carefully unsolder it, clear any solder residue from the holes, and resolder it. This can range from being relatively easy for some of the larger two-leaded components (LEDs, 10uF capacitor) to very difficult for the processor.

If you find that a component was soldered incorrectly, you will have to use a vacuum bulb or vacuum desoldering tool to unsolder it. If it's a two-leaded component like an LED it may not be terribly difficult, if it's the processor or even one of the 8-pin opto-isolators then you are going to have a major chore on your hands. We cannot stress enough that you need to check the orientation of the parts *before* you solder them. The Eggtimer Limited Warranty does not cover damage to a component while attempting to unsolder it, so make take your time and make sure you get it right before you solder.

Check Your Power Supply

Make sure that you are using one of the recommended batteries to test with. For testing, we like to use two AA alkaline batteries in a little holder; they're really cheap and they'll last a long time. Make sure that you have the polarity correct: The RED wires must go to the "+" side and the BLACK wires must go to the "-" side.

Check Your Power Switch

If you have a power switch, make sure that it's a simple SPST type so that when you close it it's simply bridging the SW terminals. You don't HAVE to use a power switch; if your battery is removable (i.e. you are using some kind of connector between the battery and the 3V pigtails) then you can simply solder a wire across the SW terminals. We do NOT recommend this for complex applications like multiple deployment using pyro charges with HPR rockets, and definitely not for airstarting. Check the Eggtimer User Guide for switch recommendations.

If It Still Doesn't Work...

There is, of course, always an outside chance that you have a bad component. We test each PC board and the surface mounted components before they leave us, and we also test each processor, transistor, and opto-isolator. Nevertheless, it is always possible that something may be wrong; there may be a bridge on the PC board itself, etc. If you have gone through all of the troubleshooting steps and the board still doesn't work, let us know at support@eggtimerrocketry.com. A high-resolution picture (5 megapixel or better) of both sides of your circuit board and a description of the problem would be very helpful...

Appendix A – Typical Connections

Below is a picture from a test setup that we have for the Eggtimer. It is very typical of what you would use in a multiple-deployment rocket... a 3.7V LiPo battery for the Eggtimer's computer, and a 9V battery for the deployment channels. You can see that the 9V battery is connected to both of the deployment channels' battery pads (BCHA, BCHB). We are using miniature Christmas tree lights for the igniter test load, they work very well and are cheap. We have hooked up all three external LEDs (READY, ALED, and BLED), an external pizo buzzer (BUZ), and a switch on the SW terminals. (It's a cheap slide switch, we recommend that you do not fly one of these, get a Schurter 033.4501 rotary switch instead). Note that this example is actually a RevC board, but the connections are virtually the same on the RevD board as well.

We have also connected a pigtail to the RST line. In a real flight, you can twist these together and have them outside the rocket; to start the flight sequence, you simply take them apart and tape them up so they won't short during the flight. We have not connected the Breakwire (BW) terminals, they are used only for airstart flights; that subject is covered extensively in the Eggtimer Users Guide.

